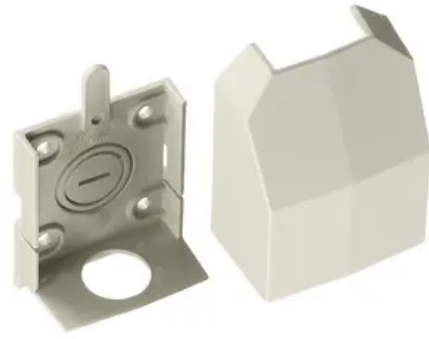


# Non-Metallic Raceway, WallTrak1 Series, Conduit Adapter, Office White

By Hubbell Wiring Device-Kellems  
Catalog # [PW1CA](#)



Non-Metallic Raceway, WallTrak1 Series, Conduit Adapter

## Features

- For connecting conduit to raceway
- Also use for ceiling feeds
- Has combination ½ in., ¾ in. and 1 in. trade size Kos

## Performance

- Environmental - Flame Rating - UL94V-0
- Environmental - Temperature Range - -25.6° to 158° F

## General

Catalog Number	PW1CA
Color	Office White
EU RoHS Indicator	Contact Manufacturer
Item Type	PW1 WallTrak (Latching) Series
Material	Non-Metallic
Series	PW1
Specifications	<ul style="list-style-type: none"><li>• Crush Resistance - 300 lbs.</li></ul>

Style  
Type  
UPC

- Impact Resistance - 5 ft. lbs.
  - Material - UV Stabilized PVC
- Conduit Adapter/Ceiling Fitting  
Miscellaneous Fittings  
783585092102

## Certifications And Compliance

Industry Standard(s)	<ul style="list-style-type: none"><li>• CSA Standard C22.2 no. 62</li><li>• E118895 / E119190</li><li>• UL Standard UL 5A</li></ul>
----------------------	---

## Logistics

Carton Quantity	10
-----------------	----

## Product Assets

[Catalogs - WDK Catalog Full 2024](#)  
[Specifications - PW1CA](#)  
[Warranty - Industrial & Commercial Products](#)