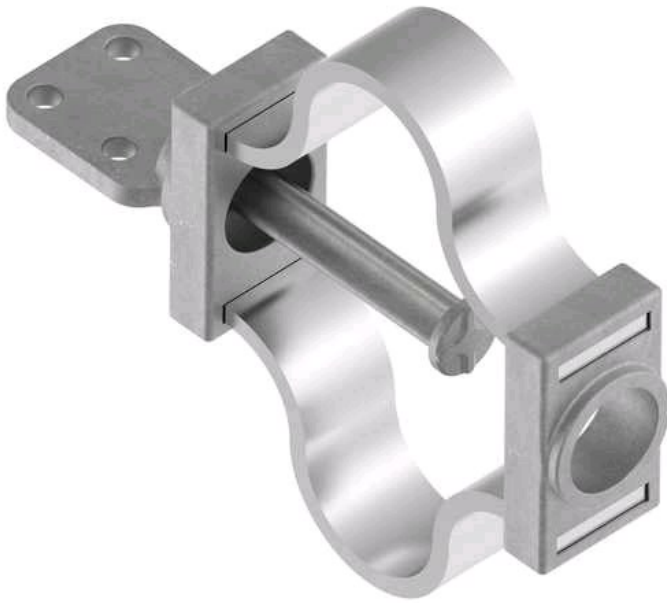


# Terminal, Aluminum Weldment

by ANDERSON  
Catalog ID: WTFH60D

Terminal, Aluminum Weldment, Expansion, Tube to Flat, tube size 6 EHIPS  
Pad: 4 hole, 4 in. TERMINAL, AL WLD FLX 6.0 IN IPS80 - D PD

- Schedule 80 Rigid Bus



\* Representative image

## Product Details

### General

Material	Aluminum
Number of Pad Holes	4
Type	Terminal, Aluminum Weldment, Expansion
UPC	096359341291

### Dimensions

Angle - Pad	180 °
Diameter - Rod / Tube	6 in
Weight	18.130 lb
Width - Pad	4 in

### Electrical Ratings

Maximum Current Rating Amps Continuous	Contact Tech Advisor
--	----------------------

### Conductor Related

Conductor Type	Aluminum Bus
----------------	--------------

**For further technical assistance, please contact us**

#### Domestic Customer Service

Hubbell Power Systems  
210 N. Allen Centralia, MO 65240 USA  
Phone: (573) 682-5521  
Fax: (573) 682-8475  
Email: [hpscsc@hubbell.com](mailto:hpscsc@hubbell.com)

#### International Customer Service

Phone: +1-573-682-5521  
Fax: +1-573-682-8516  
Email: [hpsintlcs@hubbell.com](mailto:hpsintlcs@hubbell.com)