

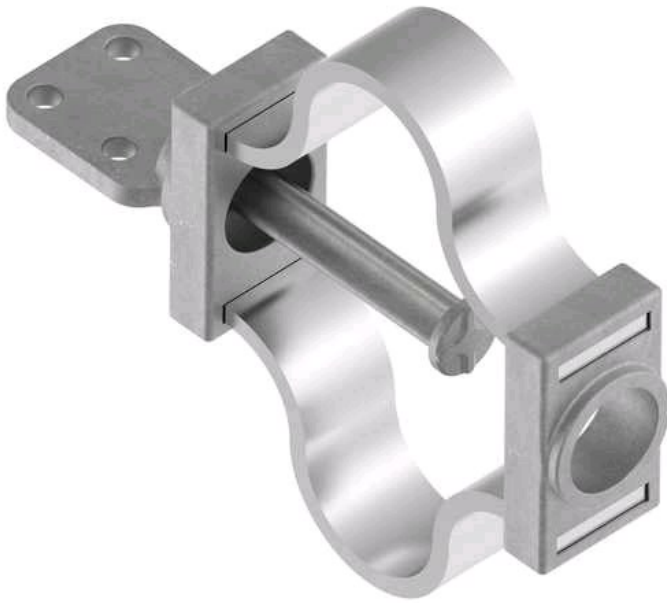


Terminal, Aluminum Weldment

by ANDERSON
Catalog ID: WFTFV20C

Terminal, Aluminum Weldment, Expansion, Tube to Vertical Flat, tube size 2 EHIPS Pad: 4 hole, 4 in. TERMINAL, AL WLD FLX 2.0 IN IPS C PD VRT

- Schedule 80 Rigid Bus, Pad rotated 90°



* Representative image

Product Details

General

Material	Aluminum
Number of Pad Holes	4
Type	Terminal, Aluminum Weldment, Expansion
UPC	096359341307

Dimensions

Angle - Pad	90 °
Diameter - Rod / Tube	2 in
Weight	7.1 lb
Width - Pad	4 in

Electrical Ratings

Maximum Current Rating Amps Continuous	Contact Tech Advisor
--	----------------------

Conductor Related

Conductor Type	Aluminum Bus
----------------	--------------

Logistics

Pallet Quantity	30 EA
-----------------	-------

For further technical assistance, please contact us

Domestic Customer Service

Hubbell Power Systems
210 N. Allen Centralia, MO 65240 USA
Phone: (573) 682-5521
Fax: (573) 682-8475
Email: hpscsc@hubbell.com

International Customer Service

Phone: +1-573-682-5521
Fax: +1-573-682-8516
Email: hpsintlcs@hubbell.com