

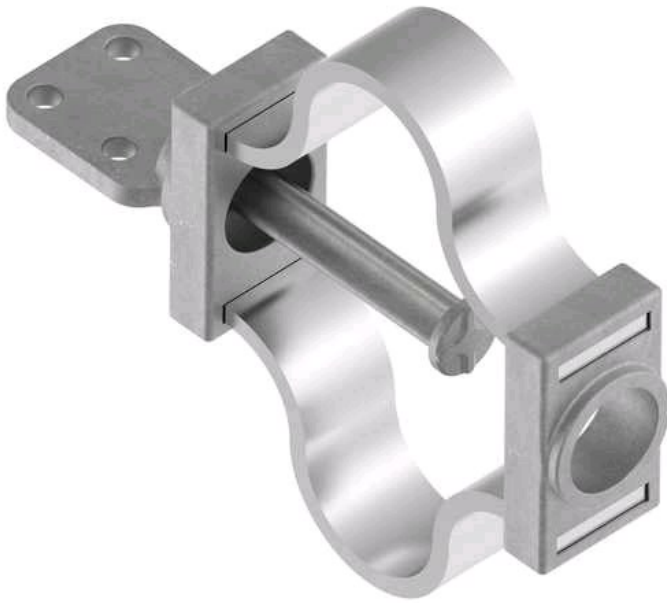


Terminal, Aluminum Weldment

by ANDERSON
Catalog ID: WFTFV30D

Terminal, Aluminum Weldment, Expansion, Tube to Vertical Flat, tube size 2-1/2 IPS Pad: 4 hole, 4 in. TERMINAL, AL WLD FLX 3.0 IN IPS D PD VRT

- The "V" (WFTFV) indicates pad will be rotated 90°



* Representative image

Product Details

General

Material	Aluminum
Number of Pad Holes	4
Type	Terminal, Aluminum Weldment, Expansion
UPC	096359341345

Dimensions

Angle - Pad	90 °
Diameter - Rod / Tube	3 in
Weight	8.036 lb
Width - Pad	4 in

Electrical Ratings

Maximum Current Rating Amps Continuous	Contact Tech Advisor
--	----------------------

Conductor Related

Conductor Type	Aluminum Bus
----------------	--------------

For further technical assistance, please contact us

Domestic Customer Service

Hubbell Power Systems
210 N. Allen Centralia, MO 65240 USA
Phone: (573) 682-5521
Fax: (573) 682-8475
Email: hpscsc@hubbell.com

International Customer Service

Phone: +1-573-682-5521
Fax: +1-573-682-8516
Email: hpsintlcs@hubbell.com