

Straight Blade Devices
20A, 125V, 2 Pole, 3 Wire Grounding
Hubbell-PRO Heavy Duty Hospital Grade
Receptacles

Features

- Tamper-resistant shutter complies with national electrical code requirements
- Triple wipe contacts
- High impact resistant decorator face
- Steel mounting strap

Ordering Information

Description	Device Color	UPC	Catalog Number
Hospital grade, tamper-resistant, Style Line® decorator	Red	783585542027	2182REDTRA

Listings

UL Listed to UL498 File No. E2186
Certified to CSA, C22.2, No. 42 File 285
Fed. Spec. W-C-596
NEMA® WD-6 Compliant

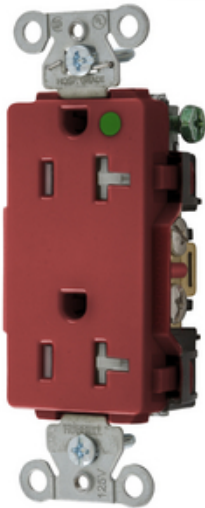
Specifications

Face	Nylon
Base	PBT
Power Contacts	Brass
Ground Contacts	Brass
Clamping Plate	Plated steel
Mounting Strap	Galvanized steel
Automatic Self-grounding Staple	Stainless steel
Mounting Screws	Zinc plated steel

Performance

Electrical	
Current Interrupting	Certified for current interrupting at full rated current
Dielectric Voltage	Withstands 2,000V minimum
Mechanical	
Product Identification	Ratings are a permanent part of the device
Terminal Accommodation	#12-#10 AWG stranded or solid copper wire only
Terminal Identification	Terminals identified in accordance with UL 498 and CSA
Environmental	
Flammability	UL 94V-2
Operating Temperature	Maximum continuous 75°C; minimum -40°C (w/o impact)

HUBBELL



Accessories

Wallplate or Weatherproof Cover StyleLine® Decorator Opening

Resources

Customer Use Drawing
eCatalog

