

H-MOSS® Controls
Passive Infrared Wall Mount Sensors



Features

- Passive infrared, low voltage sensor for aisle and high bay applications
- Coverage 120 linear ft.
- Adaptive technology - "Install and forget" operation
- Narrow coverage pattern specifically for aisles and hallways
- Swivel mounting bracket included for wall or ceiling mounting

Ordering Information

Description	Device Color	UPC Number	Catalog Number
Low voltage sensor for aisle and high bay applications	Office White	783585349244	ATP120HB

Listings

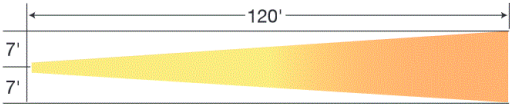
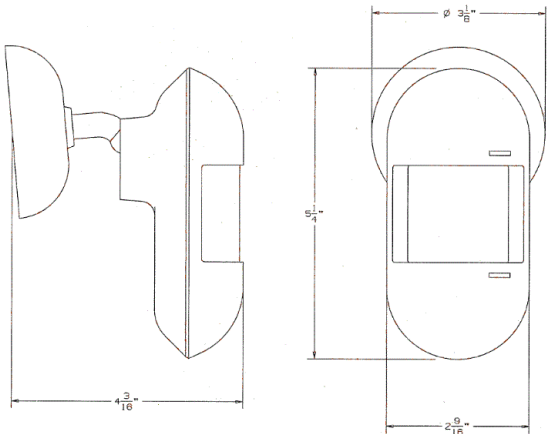
cULus listed to UL 244A
CEC Title 24 compliant
ASHRAE 90.1 compliant

Specifications

Housing	Flame retardant UL 94 V-0 ABS
Lens	Polyethylene
Dimensions	6"H x 2"W x 1.5"D
Mounting Height	8 to 30 feet

Performance

Controls	
Sensitivity	Adaptive 0 to 100%
Time Delay	Test (8 seconds), adaptive 8 to 40 minutes
Electrical	
Power Requirements	24V DC nominal, 33mA from Hubbell CU series control unit
Environmental	
Operating Temperature	32°F to 104°F (0°C to 40°C) with rate of change not exceeding 20°F (11°C) per hour
Storage Temperature	-20°F to 150°F (-29°C to 65°C); 0% to 95% non-condensing relative humidity
Sensing Indicators	
Passive Infrared	Red LED



Minor Motion: ■ Ultrasonic ■ PIR Major Motion: ■ Ultrasonic ■ PIR

Complementary Products

CU300A	Control Unit Manual-ON
CU300M	Control Unit, HD, Latching, Auto/Manual-ON
CU300HD	Wall Switch Wire Guard

Online Resources

Customer Use Drawing
eCatalog
Installation Instructions

