

Floor Boxes
Flush Rectangular Stamped Steel
Concrete Floor Boxes



Features

- Stamped steel construction
- Concentric knockouts permit various conduit sizes
- Economical and light weight for above-grade applications



Ordering Information

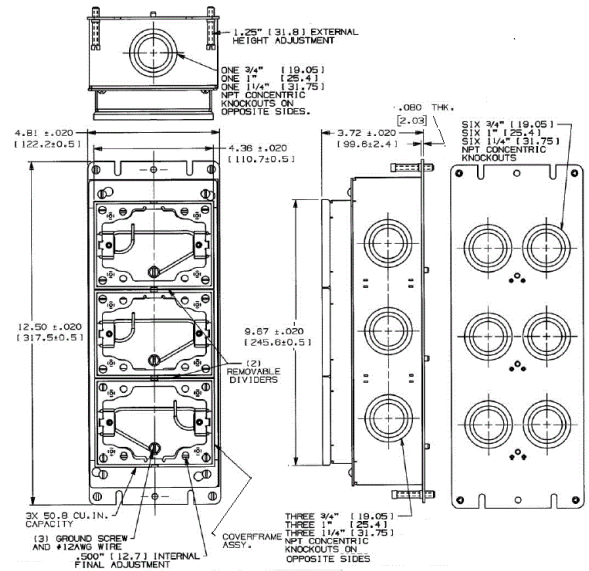
Description	Style	UPC	Catalog Number
3-Gang Deep,	Stamped Steel	783585100234	B2433

Listings

UL File Number E92074
 CSA File Number LR18416

Specifications

Collar Material	Brass
Size	3-Gang
Min. Depth of Pour	3.75" (95.3)
Cubic Capacity	50.8 cu. in. (832.5 cm ³)



Online Resources

- Customer Use Drawing
- eCatalog
- Installation Instructions

