

**Floor Boxes**  
**Flush Round Single Service**  
**Metal Concrete Floor Boxes**



**Features**

- Corrosion resistant for on-grade applications
- 1" NPT threaded conduit access holes for power
- Oversized threaded conduit access holes for low voltage



**Ordering Information**

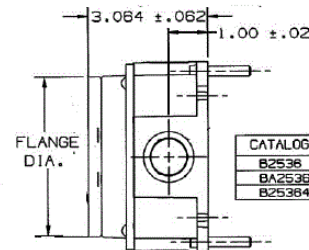
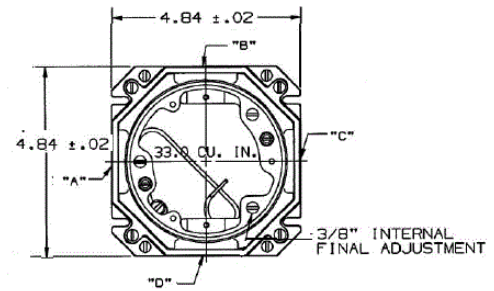
Description	Collar Material	UPC	Catalog Number
Round Metallic Floor	Brass	783585101903	B2536

**Listings**

UL File Number E31999  
 CSA File Number LR18416

**Specifications**

Style	Cast Iron
Min. Depth of Pour	3.75" (95.3)
Cubic Inch Capacity	33.0 cu. in. (540.7 cm <sup>3</sup> )



CATALOG NO.	CONDUIT HUB SIZE				FLANGE Ø
	"A"	"B"	"C"	"D"	
B2536	3/4	3/4	3/4	3/4	4 3/16
BA2536	3/4	3/4	3/4	3/4	4 3/32
B253641	1"	1"	1"	1"	4 3/16

**Online Resources**

- Customer Use Drawing
- eCatalog
- Installation Instructions