

Floor Boxes

SystemOne Recessed 2 Gang Floor Box

For Use In Concrete Floors

Features

- Designed for applications requiring up to 2 in. conduits (with use of CFBHUB2 purchased separately)
- Stamped steel construction, exterior coated with fusion bonded epoxy paint for on grade use
- Pre and post pour adjustment
- Patent pending, labor saving, easy mount device plates
- Round covers

Ordering Information

- Adjustable collar for up to 1/4 in. post pour adjustment
- 6 inch solid conductor ground pigtail in each gang

Catalog Number CFB2G30RCR	UPC Number 783585447179	Cover Series CFBS1R6xx / CFBS1R6FFxx	Box Type On Grade
Device Volume 35 cu. in.	Depth Behind Mounting Plate 2 1/2 in.	Min. Pour Depth 3 3/4 in.	

Specifications

Box Material	16 gauge galvanized steel
Access Cover Material (ordered separately)	Die cast aluminum

Required

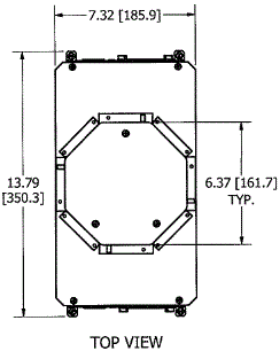
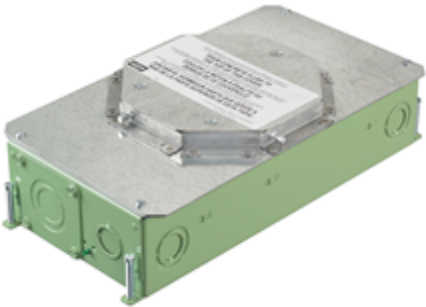
Cover

- Surface Style Rectangular Covers (for use with carpet, tile, VCT and other engineered floors) [Click here](#)

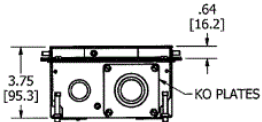
Accessories

2 in. threaded zinc hub	CFBHUB2
Replacement knock-out plate with epoxy coating	CFBKOPATECR
Replacement wire-way, used to pass wires from one compartment to the other	CFB2WW
Finished floor height adjustment ring - increase post pour adjustment 0 - 1/4 in.	CFB6RCVRR1
Finished floor height adjustment ring - increase post pour adjustment 1/4 - 1/2 in.	CFB6RCVRR2
Finished floor height adjustment ring - increase post pour adjustment 1/2 - 3/4 in.	CFB6RCVRR3

HUBBELL



TOP VIEW



END VIEW

Online Resources

- Customer Use Drawing
- eCatalog
- Installation Instructions

