

Floor Boxes

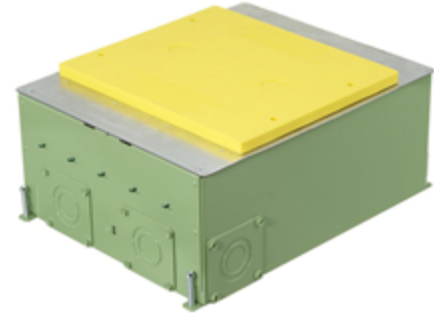
SystemOne ETERNAL™ Series Concrete Floorboxes

4/5-Gang Recessed

HUBBELL

Features

- 3.75" deep wiring chambers for large AV modules and feed-thru capacity
- External High Capacity Feed-Thru Hubs Sold Separately
- Stamped steel construction, exterior coated with fusion bonded epoxy paint for on grade use, ships with Flush Installation Cover & 1/2" Prepour Cover
- Pre and post pour adjustment
- Rectangular cover, patented labor saving easy mount device plates



Ordering Information

Cover Style	Box Type	UPC	Catalog Number
Rectangular	On/ Above Grade	783585695402	CFB45G55CRE

Listings

cULus Listed
UL 514A Listed

Specifications

Box Material	16 gauge galvanized steel
Box Finish	Gray corrosion resistant epoxy paint
Top Mounting Plates	16 gauge galvanized steel
Flush Prepour Cover	16 gauge galvanized steel
1/2" Prepour Cover	Yellow Plastic
Device Chamber Grounding	6" Long #12 AWG Solid Copper Wire
Wiring Chamber Volumes	(2) Small 35 IN ³ [574 CM ³], (2) Med 69.5 IN ³ [1139 CM ³], (2) Large 99 IN ³ [1622 CM ³]

Performance

Mechanical

Depth of Pour, Minimum	5.50" (139.7)
Depth of Pour, Recommended	6.00" (152.4)
Floor Box Cover Series	610Gxx
Floor Box Height	5.59" [142.0mm]
Floor Box Length	14.14" [359.2mm]
Floor Box Width	11.09" [281.6mm]
Trade Size Knock-Outs: Bottom	(2) 1/2", 3/4", 1", 1 1/4"
Trade Size Knock-Outs: Ends	(2) 3/4", 1", 1 1/4", 2" (Field installed CFBHUB2 for 2" metallic conduit, CFBHUB200PVC for 2" PVC conduit or CFBHUB125PVC for 1 1/4" PVC conduit)
Trade Size Knock-Outs: Sides	(2) 3/4", 1", 1 1/4", 2" (Field installed CFBHUB2 for 2" metallic conduit, CFBHUB200PVC for 2" PVC conduit or CFBHUB125PVC for 1 1/4" PVC conduit)

Dimensions in Inches (mm)

Hubbell Wiring Device-Kellems • Hubbell Incorporated (Delaware) • 40 Waterview Drive • Shelton, CT 06484

Phone (800) 288-6000 • Fax (800) 255-1031 • Specifications subject to change without notice.

Related Products

(2) 2" PVC field installed hubs, ships with (2) 1-1/2" reducer, (2) 1-1/4" reducers, and (2) 1" reducers/plugs	CFBHUB200PVC
(2) 1-1/4" PVC field installed hubs, ships with (2) 1" reducers, (2) 3/4" reducers, AND (2) 1/2" reducer/plugs	CFBHUB125PVC
2" threaded zinc hub	CFBHUB2
Rectangular pre-pour 1/2 in. extension caps (2 pack)	610GEXTENDCAP2PK
(1) StyleLine Decorator Opening	FB10MPREC

Online Resources

Customer Sales Drawings
eCatalog
Installation Instructions

