

## Floor Boxes

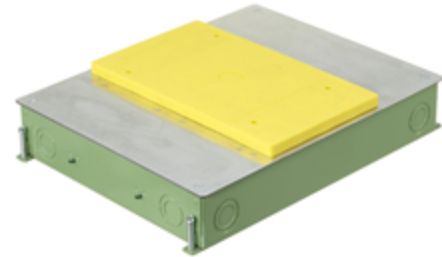
### SystemOne ETERNAL™ Series Concrete Floorboxes

#### 4-Gang Recessed

# HUBBELL

#### Features

- 3.75" deep wiring chambers for large AV modules and feed-thru capacity
- Stamped steel construction, exterior coated with fusion bonded epoxy paint for on grade use, ships with Flush Installation Cover & 1/2" Prepour Cover
- Pre and post pour adjustment
- Rectangular cover, patented labor saving easy mount device plates



#### Ordering Information

Cover Style	Box Type	UPC	Catalog Number
Rectangular	On/ Above Grade	783585695266	CFB4G25CRE

#### Listings

cULus Listed  
UL 514A Listed

#### Specifications

Box Material	16 gauge galvanized steel
Box Finish	Green corrosion resistant epoxy paint
Top Mounting Plates	16 gauge galvanized steel
Flush Prepour Cover	16 gauge galvanized steel
1/2" Prepour Cover	Yellow Plastic
Device Chamber Grounding	6" Long #12 AWG Solid Copper Wire
Wiring Chamber Depth	3.75"
Wiring Chamber Volumes	(4) 41.5 IN <sup>3</sup> [680 CM <sup>3</sup> ]

#### Related Products

Rectangular pre-pour 1/2 in. extension caps (2 pack) 24GEXTENDCAP2PK

3-Cubes, Single Circuit

PWFBMP3R

#### Online Resources

Customer Sales Drawings  
eCatalog  
Installation Instructions

#### Performance

##### Mechanical

Depth of Pour, Minimum	2.50" (63.5)
Depth of Pour, Recommended	3.00" (76.2)
Floor Box Cover Series	24Gxx
Floor Box Height	2.50"[63.5mm]
Floor Box Length	14.57" [370.1mm]
Floor Box Width	11.20" [284.5mm]
Trade Size Knock-Outs: Bottom	(4) 1/2", 3/4", 1", 1 1/4"
Trade Size Knock-Outs: Ends	(4) 1/2", 3/4", 1"
Trade Size Knock-Outs: Sides	(4) 1/2", 3/4", 1"

Dimensions in Inches (mm)

Hubbell Wiring Device-Kellems • Hubbell Incorporated (Delaware) • 40 Waterview Drive • Shelton, CT 06484

Phone (800) 288-6000 • Fax (800) 255-1031 • Specifications subject to change without notice.

