

Floor Boxes

SystemOne Recessed 4 Gang Floor Box

For Use In Concrete Floors

Features

- Designed for applications with minimum slab thickness
- Stamped steel construction, exterior coated with fusion bonded epoxy paint for on grade use
- Pre and post pour adjustment
- Patent pending, labor saving, easy mount device plates
- Rectangular covers

Ordering Information

- A ½ in. yellow plastic cover insert is included and allows for easy use in tile, finished concrete or other mediums
- 6 inch solid conductor ground pigtail in each gang

Catalog Number CFB4G25CR	UPC Number 783585190884	Cover Series 24Gxx	Box Type On Grade
Device Volume 26 1/2 cu in.	Depth Behind Mounting Plate 2 1/2 in.	Min. Pour Depth 2 1/2 in.	

Specifications

Box Material	16 gauge galvanized steel
Access Cover Material (ordered separately)	Die cast aluminum
Plastic Concrete Cover	Polypropolyne - yellow

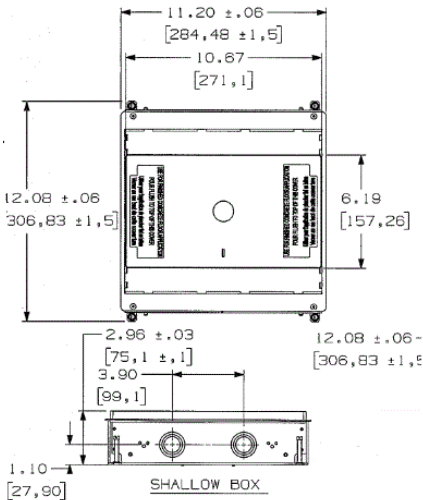
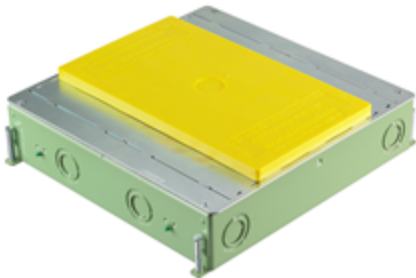
Required

- Cover
- Surface Style Rectangular Covers (for use with carpet, tile, VCT and other engineered floors) [Click here](#)
 - Flush Style Rectangular Covers (for use with tile, finished concrete and Terrazzo floors) [Click here](#)

Accessories

2 in. threaded zinc hub	CFBHUB2
Replacement knock-out plate with epoxy coating	CFBKOPATECR
Replacement wire-way, used to pass wires from one compartment to the other	CFB4WW

HUBBELL



Online Resources

- Customer Use Drawing
- eCatalog
- Installation Instructions

