

## Floor Boxes

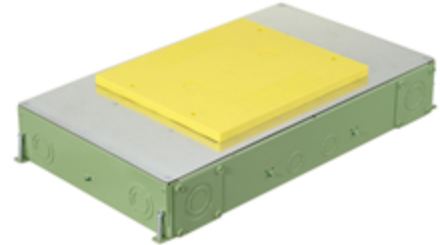
### SystemOne ETERNAL™ Series Concrete Floorboxes

## 6-Gang Recessed

# HUBBELL

### Features

- 3.75" deep wiring chambers for large AV modules and feed-thru capacity
- External High Capacity Feed-Thru Hubs Sold Separately
- Stamped steel construction, exterior coated with fusion bonded epoxy paint for on grade use, ships with Flush Installation Cover & 1/2" Prepour Cover
- Pre and post pour adjustment
- Rectangular cover, patented labor saving easy mount device plates



### Ordering Information

Cover Style	Box Type	UPC	Catalog Number
Rectangular	On/ Above Grade	783585695358	CFB6G30CRE

### Listings

cULus Listed  
UL 514A Listed

### Specifications

Box Material	16 gauge galvanized steel
Box Finish	Gray corrosion resistant epoxy paint
Top Mounting Plates	16 gauge galvanized steel
Flush Prepour Cover	16 gauge galvanized steel
1/2" Prepour Cover	Yellow Plastic
Device Chamber Grounding	6" Long #12 AWG Solid Copper Wire
Wiring Chamber Volumes	(2) 108.5 IN <sup>3</sup> [1778 CM <sup>3</sup> ] Ends, (4) 33.0 IN <sup>3</sup> [540 CM <sup>3</sup> ] Sides

### Performance

#### Mechanical

Depth of Pour, Minimum	3.00" (76.2)
Depth of Pour, Recommended	3.50" (88.9)
Floor Box Cover Series	610Gxx
Floor Box Height	3.00"[76.2mm]
Floor Box Length	19.68" [499.9mm]
Floor Box Width	11.54" [293.1mm]
Trade Size Knock-Outs: Bottom	(4) 1/2", 3/4", 1", 1 1/4", (4) 1/2", 3/4"
Trade Size Knock-Outs: Ends	(4) 1/2", 3/4", 1", 1 1/4"
Trade Size Knock-Outs: Sides	(4) 3/4", 1", 1 1/4", 2" (Field installed CFBHUB2 for 2" metallic conduit, CFBHUB200PVC for 2" PVC conduit or CFBHUB125PVC for 1 1/4" PVC conduit)

### Related Products

(2) 2" PVC field installed hubs, ships with (2) 1-1/2" reducer, (2) 1-1/4" reducers, and (2) 1" reducers/plugs	CFBHUB200PVC
(2) 1-1/4" PVC field installed hubs, ships with (2) 1" reducers, (2) 3/4" reducers, AND (2) 1/2" reducer/plugs	CFBHUB125PVC
2" threaded zinc hub	CFBHUB2
Rectangular pre-pour 1/2 in. extension caps (2 pack)	610GEXTENDCAP2PK
3-Cubes, Single Circuit	PWFBMP3R

### Online Resources

Customer Sales Drawings  
eCatalog  
Installation Instructions

Dimensions in Inches (mm)

Hubbell Wiring Device-Kellems • Hubbell Incorporated (Delaware) • 40 Waterview Drive • Shelton, CT 06484

Phone (800) 288-6000 • Fax (800) 255-1031 • Specifications subject to change without notice.

