

## Switches, Low Voltage

5A, 24VDC

## Heavy Duty, Specification Grade

# HUBBELL

### Features

- Maintained Contact
- Thread cleaning captive mounting screw
- Automatic self-grounding stainless steel staple

### Ordering Information

Description	Device Color	UPC Number	Catalog Number
Toggle, back and side wired	Red	783585554822	CSB120RLV

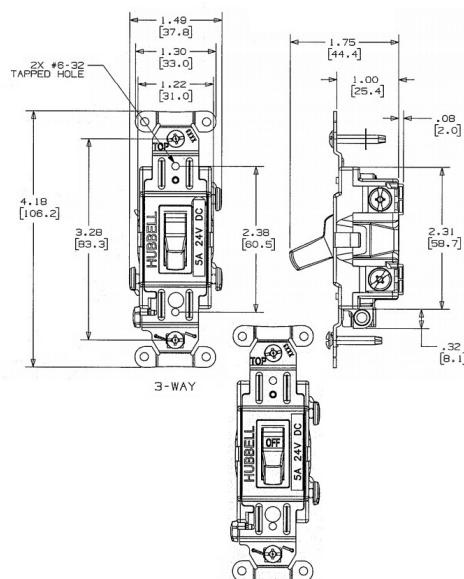


### Specifications

Front	Thermoplastic
Base	Thermoplastic
Contacts	Silver Alloy
Terminal Screws	Brass
Mounting Bridge	Steel, Zinc Plated

### Performance

Electrical	
Configuration	3-Way
Operating Current	Maximum of 5A @ 24VDC
Mechanical	
Terminal Accomodations	#14 AWG min. - #10 AWG max. solid or stranded copper wire only
Environmental	
Operating Temperature	Max. continuous: 75°C; Min. continuous: -40°C without impact



### Complementary Products

Wallplate, Toggle Opening	NP1R
Wallplate, Toggle Opening	SS1

### Online Resources

Customer Use Drawing  
eCatalog  
Installation Instructions

Dimensions in Inches (mm)

Hubbell Wiring Device-Kellems • Hubbell Incorporated (Delaware) • 40 Waterview Drive • Shelton, CT 06484

Phone (800) 288-6000 • Fax (800) 255-1031 • Specifications subject to change without notice.

