

Nightlight Products

15A, 125V, 2 Pole, 3 Wire Grounding

Commercial Specification Grade Style Line® Decorator Nightlight Receptacle

Features

- LED light activated when low levels of ambient light are detected by photosensor
- Tamper-resistant shutter complies with national electrical code
- Aesthetic Style Line® decorator design

Ordering Information

Description	Device Color	UPC	Catalog Number
Style Line® decorator nightlight receptacle, back and side wired	Light Almond	783585541327	DR15NLLA

Listings

UL Listed to UL498 File No. E2186
Certified to CSA, C22.2, No. 42
NEMA® WD-6 Compliant

Specifications

Face	Nylon
Base	Nylon
Lens	Polycarbonate
Power Contacts	.030 in. (.8) Brass
Wire Clamp	.062 in. (1.6) Nickel plated steel
Mounting Strap	Galvanized Steel
Terminal Screws	Plated Steel
Automatic Self-grounding Staple	Stainless steel
Mounting Screws	Zinc Plated Steel

Performance

Electrical

Color Temperature	3400K - 3600K
Dielectric Voltage	Withstands 2,000V minimum
LED Energy Consumed	0.5 watt
Light Output	0.5 Lumens
Rating	15A, 125VAC Only

Mechanical

Product Identification	Ratings are a permanent part of the device
Terminal Accommodation	#14-#10 AWG copper stranded or solid conductor only
Terminal Identification	Terminals identified in accordance with UL 498 and CSA

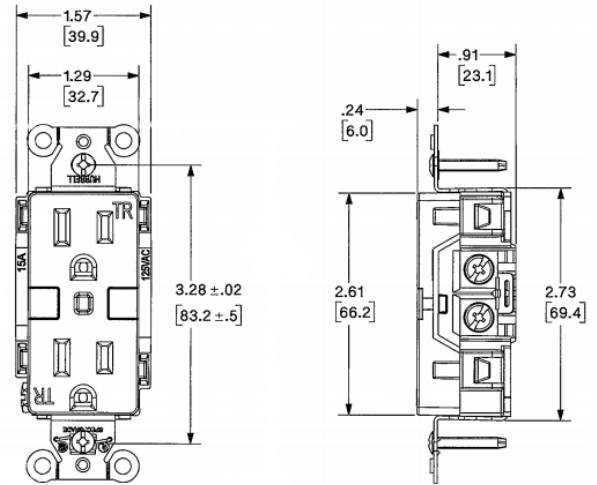
Environmental

Flammability	UL 94 V-2
Operating Temperatures	Maximum continuous 75°C; minimum -40°C (w/o impact)

HUBBELL



15A 125V AC
NEMA 5-15R
UL CSA
0.5 HP



Online Resources

Customer Use Drawing
eCatalog
Installation Instructions

Dimensions in Inches (mm)

Hubbell Wiring Device-Kellems • Hubbell Incorporated (Delaware) • 40 Waterview Drive • Shelton, CT 06484

Phone (800) 288-6000 • Fax (800) 255-1031 • Specifications subject to change without notice.

