

## Floor Boxes

### Flush Rectangular Concrete Floorboxes

#### 1-Gang/ Single Service

# HUBBELL

#### Features

- Typically used in 2nd Floor and Above Concrete Floors
- Pregalvanized Stamped Steel Box
- (1) 1/2" & (1) 3/4", (2) 1/2" & (1) 3/4", (2) 3/4", 1", 1-1/4" Concentric Knockouts
- 2.75" minimum depth of pour
- 1.25" prepour and 0.50" post pour adjustment

#### Ordering Information

Cover Style	Box Type	UPC	Catalog Number
Rectangular	Above Grade	783585695921	FB2421

#### Listings

cULus Listed  
UL 514A Listed  
CSA C22.2 No 18 certificated

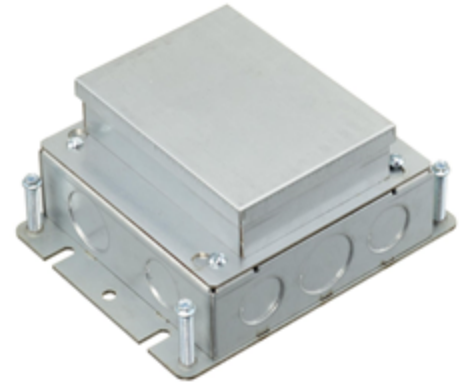
#### Specifications

Box Base Material	Stamped Steel
Box Top Material	Stamped Steel
Box Finish	Green Powder Paint
Concrete Cover	Tin Plate
Cover Frame Material	Thermoplastic
Device Chamber Grounding	6" Long #12 AWG Solid Copper Wire
Low Voltage Dividers	Stamped Steel
Wiring Chamber Volumes	37.3 IN <sup>3</sup> [611.2 CM <sup>3</sup> ]

#### Performance

##### Mechanical

Box Height	2.75" [69.8mm]
Box Length	4.81" [122.2mm]
Box Width	6.00" [152.4mm]
Concrete Pour- Minimum Depth	2.75" [69.9mm]
Concrete Pour- Post Pour Adjustment	.50" [12.7mm]
Knockouts – Bottom	(2) 3/4", 1", 1-1/4"
Knockouts – Ends	(2) 1/2" & (1) 3/4"
Knockouts – Sides	(1) 1/2" & (1) 3/4"



#### Related Products

Brass Cover Flange	S5017GR
Aluminum Cover Flange	SA5017GR
Brass Surface Flange	SB3083W
Aluminum Surface Flange	SA3083W

#### Online Resources

Customer Sales Drawings  
eCatalog  
Installation Instructions

Dimensions in Inches (mm)

Hubbell Wiring Device-Kellems • Hubbell Incorporated (Delaware) • 40 Waterview Drive • Shelton, CT 06484

Phone (800) 288-6000 • Fax (800) 255-1031 • Specifications subject to change without notice.

