

## Floor Boxes

### Flush Rectangular Concrete Floorboxes

#### 1-Gang/ Single Service

#### Features

- For Use In Slab on Grade, 2nd Floor and Above Concrete Floors
- Cast Iron Base and Stamped Steel Top with Green Corrosion-Resistant Paint
- (4) 1" Threaded Hubs, Ships with (2) 1" to 3/4" Threaded Reducers
- 3.50" minimum depth of pour
- 1.25" prepour and 0.875" post pour adjustment

#### Ordering Information

Cover Style	Box Type	UPC	Catalog Number
Rectangular	On/ Above Grade	783585696041	FB4133

#### Listings

cULus Listed  
UL 514A Listed  
CSA C22.2 No 18 certificated

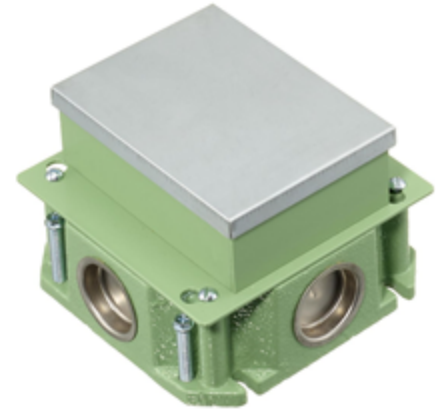
#### Specifications

Box Base Material	Cast Iron
Box Top Material	Stamped Steel
Box Finish	Green Powder Paint
Concrete Cover	Tin Plate
Cover Frame Material	Thermoplastic
Device Chamber Grounding	6" Long #12 AWG Solid Copper Wire
Low Voltage Divider	Stamped Steel
Wiring Chamber Volumes	33.0 IN <sup>3</sup> [540.8 CM <sup>3</sup> ]

#### Performance

Mechanical	
1" to 3/4" Threaded Reducer	2 Each
Box Height	3.42" [87.0mm]
Box Length	4.85" [123.2mm]
Box Width	4.85" [123.2mm]
Concrete Pour- Minimum Depth	3.50" [93.5mm]
Concrete Pour- Post Pour Adjustment	.875" [22.2mm]
Threaded Hubs	(4) 1"

# HUBBELL



#### Related Products

Brass Cover Flange	S5017GR
Aluminum Cover Flange	SA5017GR
Brass Surface Flange	SB3083W
Aluminum Surface Flange	SA3083W

#### Online Resources

Customer Sales Drawings  
eCatalog  
Installation Instructions

Dimensions in Inches (mm)

Hubbell Wiring Device-Kellems • Hubbell Incorporated (Delaware) • 40 Waterview Drive • Shelton, CT 06484

Phone (800) 288-6000 • Fax (800) 255-1031 • Specifications subject to change without notice.

