

Floor Boxes

Flush Rectangular Concrete Floorboxes

2-Gang/ Multiservice

HUBBELL

Features

- For Use In Slab on Grade, 2nd Floor and Above Concrete Floors
- Cast Iron Box with Green Corrosion-Resistant Paint
- (4) $\frac{3}{4}$ " Threaded Hubs
- 2.00" minimum depth of pour
- 1.25" prepour, no post pour adjustment

Ordering Information

Cover Style	Box Type	UPC	Catalog Number
Rectangular	On/ Above Grade	783585696058	FB4214

Listings

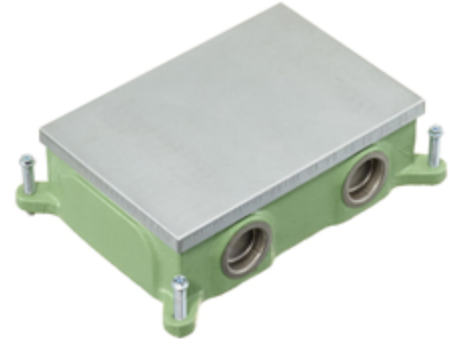
cULus Listed
UL 514A Listed
CSA C22.2 No 18 certificated

Specifications

Box Base Material	Cast Iron
Box Top Material	Stamped Steel
Box Finish	Green Powder Paint
Concrete Cover	Tin Plate
Cover Frame Material	Thermoplastic
Device Chamber Grounding	6" Long #12 AWG Solid Copper Wire
Low Voltage Divider	Stamped Steel
Wiring Chamber Volumes	16.0 IN ³ [262.2 CM ³]

Performance

Mechanical	
Box Height	2.05" [51.9mm]
Box Length	5.46" [138.7mm]
Box Width	7.50" [190.4mm]
Concrete Pour- Minimum Depth	2.00" [50.8mm]
Concrete Pour- Post Pour Adjustment	NA
Threaded Hubs	(4) $\frac{3}{4}$ "



Related Products

Brass Cover Flange	S5017GR
Aluminum Cover Flange	SA5017GR
Brass Surface Flange	SB3084W
Aluminum Surface Flange	SA3084W

Online Resources

Customer Sales Drawings
eCatalog
Installation Instructions

Dimensions in Inches (mm)

Hubbell Wiring Device-Kellems • Hubbell Incorporated (Delaware) • 40 Waterview Drive • Shelton, CT 06484

Phone (800) 288-6000 • Fax (800) 255-1031 • Specifications subject to change without notice.

