

Switches, Three Way

20A, 120-277V AC

EdgeConnect™ Extra Heavy Duty Industrial Switch

HUBBELL

Features

- Back wired screwless termination for faster termination time
- No need for screwdriver and torque wrench
- Spring Termination eliminates strand relaxation
- Strip gauge for accurate wiring
- Automatic self-grounding clip

Ordering Information

Description	Color	UPC	Catalog Number
3-Way, Toggle	White	78358596373	HBL1223STW

Listings

UL Listed
CSA Certified
Fed Spec

Specifications

Material	Polycarbonate
Contacts	Silver Alloy
Mounting Bridge	Brass

Performance

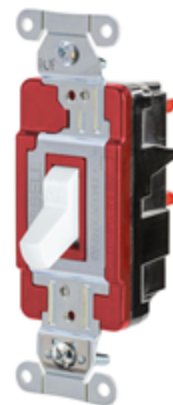
Electrical	
Dielectric Voltage	Withstands 1500V AC minimum for 1 minute
Max. Continuous Current	20A
Max. Working Voltage	277V AC
Overload	Minimum 4.8 times rated current for 100 cycles
Temperature Rise	30°C maximum at rated current

Mechanical

Terminal Accommodations	#14 AWG min. - #10 AWG max. solid and stranded copper wire only
-------------------------	---

Environmental

Flammability	UL 94V-2
Operating Temperature	Max. continuous: 75°C; Min. continuous: -40°C without impact



Online Resources

Customer Sales Drawings
eCatalog
Installation Instructions

Dimensions in Inches (mm)

Hubbell Wiring Device-Kellems • Hubbell Incorporated (Delaware) • 40 Waterview Drive • Shelton, CT 06484

Phone (800) 288-6000 • Fax (800) 255-1031 • Specifications subject to change without notice.

