

## Stage Pin Devices

### 20A/125V Clear Male Inline

# HUBBELL

## Ordering Information

Description	Device Color	UPC Number	Catalog Number
Compatible with installed base, Impact Resistant, ESTA Compliant 20A Stage Pin Devices	Clear	783585539829	HBL20SPMC

## Listings

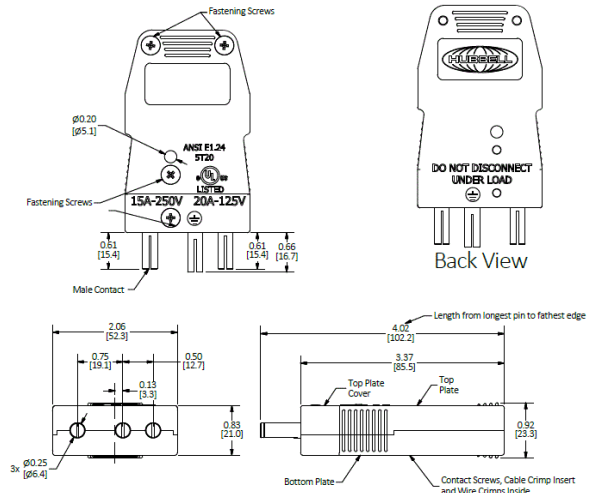
cULus  
UL Enc Type 1  
ESTA Compliant

## Specifications

Housing Material	Nylon
Contact Material	Brass

## Performance

Electrical	
Amperage Rating	20A Maximum
Voltage Rating	125V Maximum
Mechanical	
Wire Range	#14/3 SJO - #10/3 SJO
Environmental	
Moisture Resistance	UL Enclosure Type 1



## Single Cable Sets and Breakouts in One Device

Device	Cable Combination	Device	Cable Combination	
60A/125V	(3) #6 SC	100A/125V	(2) #4 SC	
	(6) #6 SC		(1) #6 SC	
	(2) #4 SC		(4) #4 SC	
	(1) #6 SC		(2) #6 SC	
	#8/3		(2) #2 SC	(1) #6 SC
	#6/3		#6/3 AWG	TYPE W
#4/3	TYPE W	#4/3 AWG	TYPE W	

## Online Resources

Customer Sales Drawing  
eCatalog  
Installation Instructions

Dimensions in Inches (mm)

Hubbell Wiring Device-Kellems • Hubbell Incorporated (Delaware) • 40 Waterview Drive • Shelton, CT 06484

Phone (800) 288-6000 • Fax (800) 255-1031 • Specifications subject to change without notice.

