

Stage Pin Devices
20A/125V Male Inline



Ordering Information

Description	Device Color	UPC Number	Catalog Number
Compatible with installed base, Impact Resistant, ESTA Compliant 20A Stage Pin Devices	Black	783585539812	HBL20SPMOEM

Listings

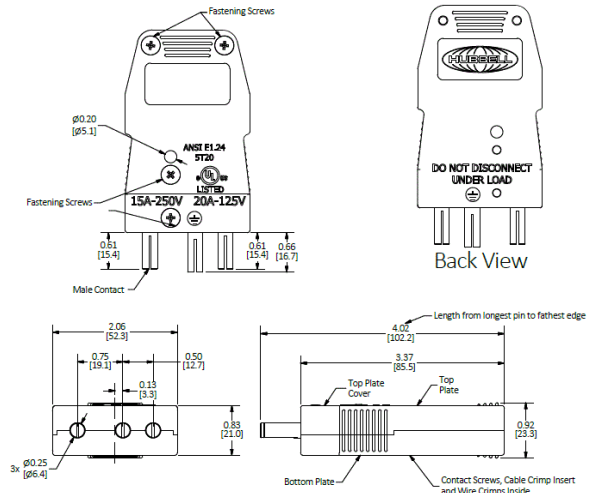
cULus
 UL Enc Type 1
 ESTA Compliant

Specifications

Housing Material	Nylon
Contact Material	Brass

Performance

Electrical	
Amperage Rating	20A Maximum
Voltage Rating	125V Maximum
Mechanical	
Wire Range	#14/3 SJO - #10/3 SJO
Environmental	
Moisture Resistance	UL Enclosure Type 1



Single Cable Sets and Breakouts in One Device

Device	Cable Combination	Device	Cable Combination	
60A/125V	(3) #6 SC	100A/125V	(2) #4 SC	
	(6) #6 SC		(1) #6 SC	
	(2) #4 SC		(4) #4 SC	
	(1) #6 SC		(2) #6 SC	
	#8/3 TYPE W		100A/250V	(2) #2 SC
	#6/3 SOOW		(1) #6 SC	
#4/3 TYPE W	#6/3 AWG	TYPE W		
	#4/3 AWG	TYPE W		

Online Resources

- Customer Sales Drawing
- eCatalog
- Installation Instructions

Dimensions in Inches (mm)

Hubbell Wiring Device-Kellems • Hubbell Incorporated (Delaware) • 40 Waterview Drive • Shelton, CT 06484
 Phone (800) 288-6000 • Fax (800) 255-1031 • Specifications subject to change without notice.

