

Stage Pin Devices

20A/125V Male Panel Mount

HUBBELL

Ordering Information

Description	Device Color	UPC Number	Catalog Number
Compatible with installed base, Impact Resistant, ESTA Compliant 20A Stage Pin Devices	Black	783585539874	HBL20SPMR

Listings

cULus
UL Enc Type 1
ESTA Compliant

Specifications

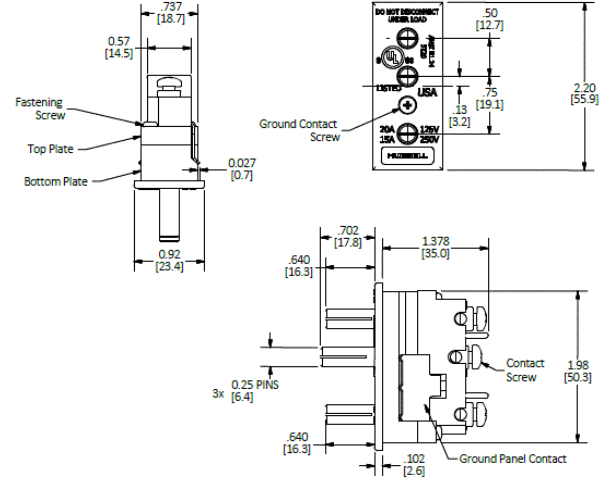
Housing Material	Nylon
Contact Material	Brass

Performance

Electrical	
Amperage Rating	20A Maximum
Voltage Rating	125V Maximum

Mechanical	
Wire Range	#14-12 AWG THHN

Environmental	
Moisture Resistance	UL Enclosure Type 1



Single Cable Sets and Breakouts in One Device

Device	Cable Combination	Device	Cable Combination
60A/125V	(3) #6 SC	100A/125V	(2) #4 SC
	(6) #6 SC		(1) #6 SC
	(2) #4 SC		(4) #4 SC
	(1) #6 SC		(2) #6 SC
	(2) #8/3 TYPE W		(2) #2 SC
100A/250V	(1) #6 SC	(2) #6/3 AWG TYPE W	
	(2) #8/3 SOOW	(1) #6 SC	
	(2) #4/3 TYPE W	(2) #4/3 AWG TYPE W	

Online Resources

Customer Sales Drawing
eCatalog
Installation Instructions

Dimensions in Inches (mm)

Hubbell Wiring Device-Kellems • Hubbell Incorporated (Delaware) • 40 Waterview Drive • Shelton, CT 06484

Phone (800) 288-6000 • Fax (800) 255-1031 • Specifications subject to change without notice.

