

Hubbellock® Devices  
 30A, 600V AC, 20A, 250V DC, 4 Pole, 5 Wire  
 Grounding

# HUBBELL

## Hubbellock® Receptacle

### Features

- Spring loaded safety shutter contains arcing when mating or un-mating devices under load
- Spring loaded safety shutter automatically ejects the plug eliminating contact teasing
- Box terminals in conjunction with screws with pressure pads provide maximum termination strength and dependability
- Metallic weather protective spring loaded cover provides protection from moisture and dust

### Ordering Information

Description	Device Color	UPC	Catalog Number
Black phenolic interior, aluminum weatherproof housing, blue finish	Blue	783585017594	HBL25250

### Listings

Listed to UL Standard  
 Certified to CSA Standard

### Specifications

Housing	Cast aluminum
Receptacle Interior	Thermoset
Contacts	Brass
Terminal Screws	Zinc plated steel

### Performance

#### Electrical

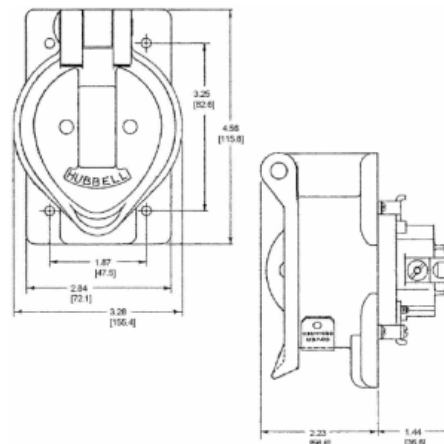
Current Interrupting	Certified for current interrupting at full rated current
Dielectric Voltage	2,000V minimum

#### Mechanical

Terminal Accommodation	#10 AWG - #6 AWG solid or stranded copper wire only.
Terminal Identification	Terminals identified in accordance with UL 498

#### Environmental

Flammability	UL 94 V0 for Receptacles and Inlets.HB or better for Plugs and Connectors
Moisture Resistance	IP30 Suitability
Operating Temperatures	Maximum Continuous 75°C; Minimum -40°C (w/o impact)



### Accessories

Plug	HBL25415B
------	-----------

### Resources

Customer Use Drawing  
 eCatalog

Dimensions in Inches (mm)

Hubbell Wiring Device-Kellems • Hubbell Incorporated (Delaware) • 40 Waterview Drive • Shelton, CT 06484

Phone (800) 288-6000 • Fax (800) 255-1031 • Specifications subject to change without notice.

