

Power and A/V Activation Box

Wall Boxes

4-11/16" Square Boxes

Features

- Designed for quick installation of flex, MC, MCI, MCI-A, MC-PCS, AC, and HCF Cable
- Accepts cable sizes from 14/2 up to 10/3 for most cable types
- Cables install 3 TIMES FASTER than traditional connector
- 4-11/16 in. sq. boxes are 2-1/8 in. deep and includes 1 STAB-IT® II connector
- Each STAB-IT® II connector accomodates three cables
- Suitable for use without a bonding jumper in circuits up to 600 volts
- Improved design allows each cable to easily be removed, allows connector to be reused

Ordering Information

Description	UPC Number	Catalog Number
4-11/16 in. Square Box	783585697178	HBL254SCM

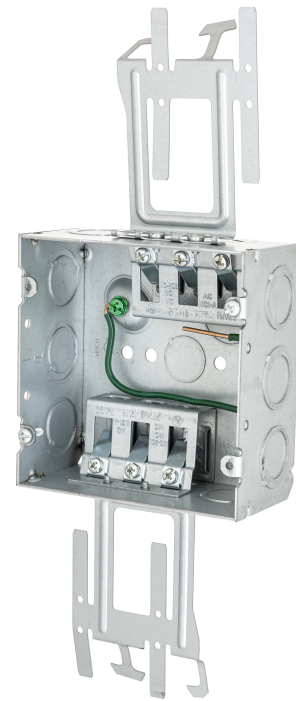
Listings

cULus Listed

Specifications

Material	Pre Galvanized Steel
Cubic Capacity	42 cu.in.
Knockouts	Side- (8) 1/2"-3/4" TKO, (6) Cable Priouts Back- (1) 1/2 in. ,
Mounting Method	Includes "M" style bracket for stud mounting
Mechanical	4-11/16 in. Square Box, 2-1/8 in. Deep (2) STAB-IT®II Connectors with Pigtail and Cable Management Clips
Grounding	8 in. #12 Solid Copper Pigtail

HUBBELL



Online Resources

eCatalog

Dimensions in Inches (mm)

Hubbell Wiring Device-Kellems • Hubbell Incorporated (Delaware) • 40 Waterview Drive • Shelton, CT 06484

Phone (800) 288-6000 • Fax (800) 255-1031 • Specifications subject to change without notice.

