

Hubbellock® Devices
60A, 600V AC, 3 Pole, 4 Wire Grounding
Hubbellock® Flanged Receptacle

HUBBELL

Features

- Spring loaded safety shutter contains arcing when mating or un-mating devices under load
- Spring loaded safety shutter automatically ejects the plug eliminating contact teasing
- Box terminals in conjunction with stainless steel terminal screws provide maximum termination strength and dependability
- Metallic housing provides protection from damage in harsh environments

Ordering Information

Description	Device Color	UPC	Catalog Number
Black phenolic interior with steel housing and flange	Yellow	783585017600	HBL26421

Listings

Listed to UL Standard
Certified to CSA Standard

Specifications

Flanged Housing	Zinc plated steel
Receptacle Interior	Phenolic
Contacts / Springs	Copper alloy
Terminal	Copper
Terminal Screws	Stainless steel

Performance

Electrical

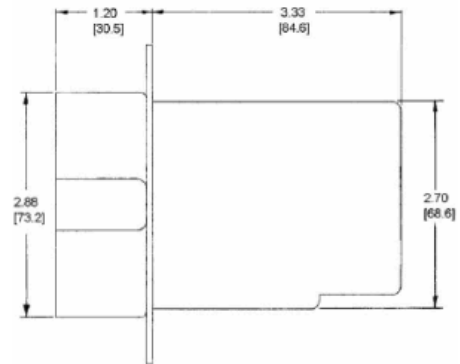
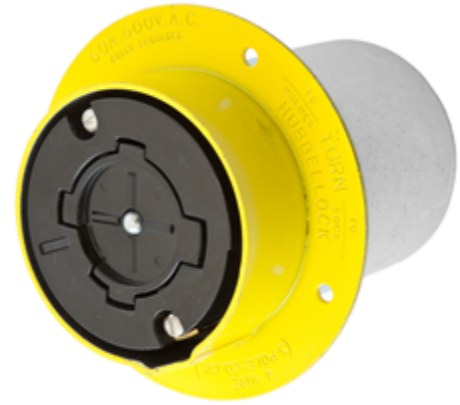
Current Interrupting	Certified for current interrupting at full rated current
Dielectric Voltage	2,000V minimum

Mechanical

Terminal Accomodation	#8 AWG - #4 AWG solid or stranded copper wire only.
Terminal Identification	Terminals identified in accordance with UL 498

Environmental

Flammability	UL 94 V0
Moisture Resistance	IP30 Suitability
Operating Temperatures	Maximum Continuous 75°C Minimum -40°C (w/o impact)



Accessories

Plug	HBL26419
------	----------

Resources

Customer Use Drawing
eCatalog

Dimensions in Inches (mm)

Hubbell Wiring Device-Kellems • Hubbell Incorporated (Delaware) • 40 Waterview Drive • Shelton, CT 06484

Phone (800) 288-6000 • Fax (800) 255-1031 • Specifications subject to change without notice.

