

**IEC Pin and Sleeve  
30A, 550V DC, 2 Pole, 3 Wire**



**Watertight Receptacle**

**Features**

- UL Type 4X, 12 and IP69k environmental ratings
- Impact and corrosion resistant insulated non-metallic housing
- Watertight neoprene gland seal to prevent water ingress from entering at cable entrance
- Sequential contact engagement to prevent a momentary over-voltage



**Ordering Information**

Description	UPC	Catalog Number
DC Rated Pin and Sleeve Receptacle	783585242354	HBL330R8WDC

**Listings**

UL Listed, File E146032  
 CSA Certified File LR285C  
 UL Classified to IEC 60309-1 IEC 60309-2

**Specifications**

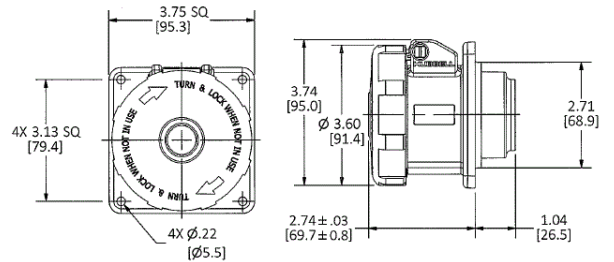
Housing	PBT
Closure Covers	PBT
Sealing Gasket	Solid Neoprene
Retainer	High-Impact Thermoset
Gaskets	Santoprene
Terminal Screws	Stainless Steel

**Performance**

Electrical	
Current Interrupting Abnormal Overload	These devices are not rated for current rupture One cycle of operation making and breaking 150% of rated current
Max. Working Voltage	550V DC

Mechanical	
Impact Resistance	Per UL1682
Product Identification	Identification and ratings are a permanent part of the device housing
Terminal Identification	Terminals identified in accordance with North American and IEC conventions

Environmental	
Flammability	V-0
Ingress Protection	TYPE 3R,3RX,4X and IP68,IP69K
Moisture Resistance	IEC 60309-1
Operating Temperatures	Maximum Continuous 75°C; Minimum - 40°C w/o impact



**Complementary Products**

Cover Assemblies

Dimensions in Inches (mm)

Hubbell Wiring Device-Kellems • Hubbell Incorporated (Delaware) • 40 Waterview Drive • Shelton, CT 06484

Phone (800) 288-6000 • Fax (800) 255-1031 • Specifications subject to change without notice.

