

Straight Blade Devices

20A, 125V, 2 Pole, 3 Wire Grounding

HBL<sup>®</sup> Extra Heavy Duty MAX Compact, Side Wired Only, Duplex Receptacle

- Features
- Slender/compact design
  - Brass Mounting Strap
  - Triple wipe contacts

Ordering Information

Description	Device Color	UPC Number	Catalog Number
Side wired only	Ivory	783585434803	HBL53421

Listings

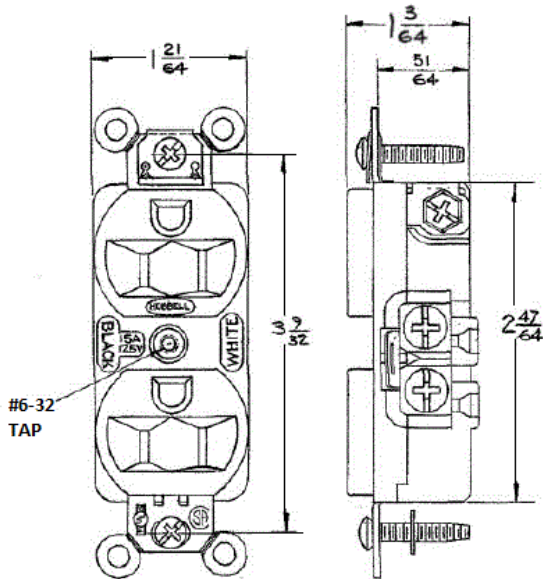
UL Listed to UL498 File No. E2186  
Certified to CSA 22.2, No. 42 File 285  
Fed. Spec. WC596  
NEMA<sup>®</sup> WD-6 Compliant

Specifications

Face	Nylon
Base	PBT
Power Contacts	.032" (.8) Brass
Ground Contact	.031 in. (.8) Brass
Terminal Screws	Brass
Mounting Strap	.050" (1.3) Brass
Automatic Self-grounding Clip	Stainless steel
Mounting Screws	Steel-Zinc Plated

Performance

<b>Electrical</b>	
Current Interrupting	Certified for current interrupting at full rated current
Dielectric Voltage	Withstands 2,000V minimum
<b>Mechanical</b>	
Product Identification	Ratings are a permanent part of the device
Terminal Accommodation	#12-#10 AWG stranded or solid copper wire only
Terminal Identification	Terminals identified in accordance with UL 498 and CSA
<b>Environmental</b>	
Flammability	Top: UL 94V-2, Base: UL 94V-0
Operating Temperatures	Maximum continuous 75°C; minimum -40°C (w/o impact)



- Complementary Products
- Wallplate or Weatherproof Cover
  - Duplex Opening

- Online Resources
- Customer Sales Drawings
  - eCatalog
  - Installation Instructions

