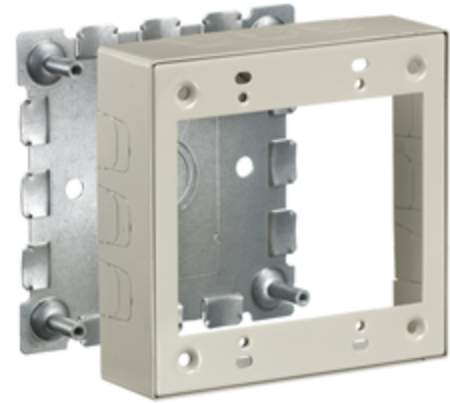


Raceway Metal Raceway 2-Gang Shallow Box

HUBBELL

Features

- For use with HBL500, HBL700 and HBL750 Series Raceway
- Hubbell Handi-Screw® eases installation by eliminating difficult to install long screws
- Rounded corners with no sharp edges
- One seam construction provides a “clean” look
- Box design allows standard wallplates to be mounted flush with virtually no perimeter profile exposed



Ordering Information

Description	Color	UPC Number	Catalog Number
2-Gang Shallow Box	Ivory	783585423487	HBL57472IVA

Listings

UL Listed
CSA Certified

Specifications

Height	4.54"
Width	4.64"
Length	1.38"

Online Resources

eCatalog

Dimensions in Inches (mm)

Hubbell Wiring Device-Kellems • Hubbell Incorporated (Delaware) • 40 Waterview Drive • Shelton, CT 06484

Phone (800) 288-6000 • Fax (800) 255-1031 • Specifications subject to change without notice.

