

Raceway
Aluminum Raceway
HBLALU5000 and HBLALU7620 Series
Toggle Switch Cover

HUBBELL

Features

- Base Mounted Device
- For single pole, two pole, three way or four way switches.

Ordering Information

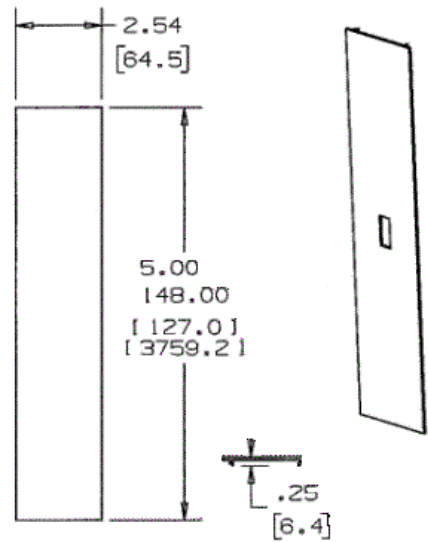
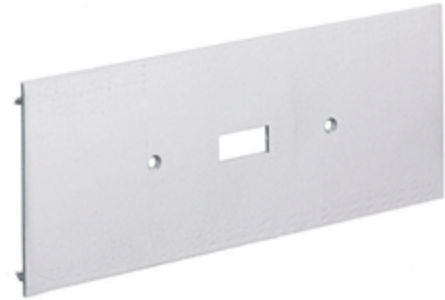
| Description | Material | UPC Number | Catalog Number |
|---------------------|-------------------|--------------|----------------|
| Toggle Switch Cover | Anodized Aluminum | 783585111032 | HBLALU57NBM |

Listings

UL Listed
CSA Certified

Specifications

| | |
|--------|--------|
| Height | 2.54" |
| Width | 12.00" |
| Length | 0.20" |



Online Resources

Customer Use Drawing
eCatalog
Installation Instructions

Dimensions in Inches (mm)

Hubbell Wiring Device-Kellems • Hubbell Incorporated (Delaware) • 40 Waterview Drive • Shelton, CT 06484

Phone (800) 288-6000 • Fax (800) 255-1031 • Specifications subject to change without notice.

