

## Accessories

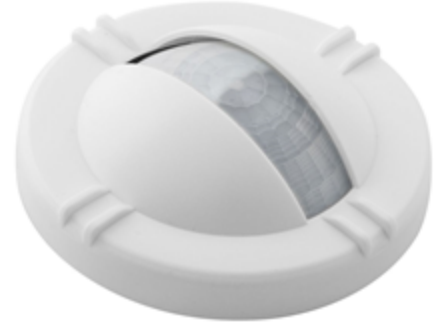
### OPTIMYZER<sup>®</sup>

## High Bay Replacement Lens

# HUBBELL

### Features

- End of aisle lens for high bay applications
- 1.4 to H radius to mounting height, up to 30'; 1.1 to H radius to mounting height, 30' to 45'
- IP65, NEMA 3R watertight, and outdoor rated, when use with suffix XT sensors



### Ordering Information

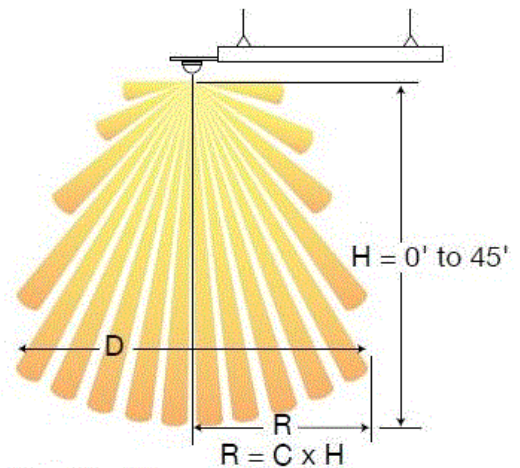
Description	Device Color	UPC Number	Catalog Number
End of aisle lens for high bay applications	White	783585565422	HBRLXTEA

### Listings

cULus Listed

### Specifications

Casing	High-impact injection-molded thermoplastic
Size	3.25" Diameter x 1.25 height
Weight	0.8 oz
Mounting	Insert and twist clockwise on sensor's face



### Online Resources

eCatalog

### Performance

#### Environment

Moisture Resistance	IP65 Suitability
Operating temperature	-40°F to 149°F (-40°C to 65°C)
Relative humidity	0% to 95%

Dimensions in Inches (mm)

Hubbell Wiring Device-Kellems • Hubbell Incorporated (Delaware) • 40 Waterview Drive • Shelton, CT 06484

Phone (800) 288-6000 • Fax (800) 255-1031 • Specifications subject to change without notice.

