

Straight Blade Devices

20A, 125V, 2 Pole, 3 Wire Grounding

HBL[®] Extra Heavy Duty MAX Specification Grade Duplex Receptacles

HUBBELL

Features

- Triangle marking on face indicates isolated ground
- Weather-resistance complies with national electrical code requirements
- Slender/compact design

Ordering Information

Description	Device Color	UPC Number	Catalog Number
Weather-Resistant, Isolated ground	Orange	783585320427	IG5362WR

Listings

UL Listed to UL498 File No. E2186
Certified to CSA, C22.2, No. 42 File 285
Fed. Spec. WC596
NEMA[®] WD-6 Compliant

Specifications

Face	Nylon
Base	PBT
Contacts	0.031" (0.8) Brass
Terminal Screws	Brass
Clamp	Nickel plated steel
Mounting Strap	0.050" (1.3) Brass
Automatic Self-grounding Clip	Stainless steel
Mounting Screws	Stainless Steel

Performance

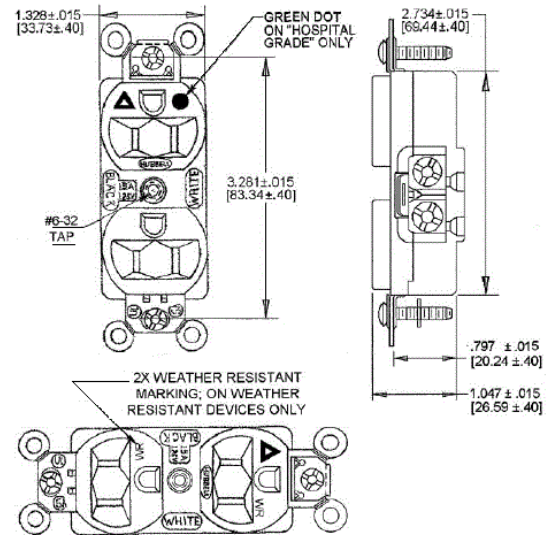
Electrical	
Current Interrupting	Certified for current interrupting at full rated current
Dielectric Voltage	Withstands 2,000V minimum

Mechanical	
Product Identification	Ratings are a permanent part of the device
Terminal Accommodation	#12-#10 AWG stranded or solid copper wire only
Terminal Identification	Terminals identified in accordance with UL 498 and CSA

Environmental	
Flammability	Top: UL 94V-2, Base: UL 94V-0
Operating Temperatures	Maximum continuous 75°C; minimum -40°C (w/o impact)



20A 125V
NEMA 5-20R
UL CSA
1 HP



Complementary Products

Wallplate or Weatherproof Cover

Duplex Opening

Online Resources

Customer Sales Drawings
eCatalog
Installation Instructions

Dimensions in Inches (mm)

Hubbell Wiring Device-Kellems • Hubbell Incorporated (Delaware) • 40 Waterview Drive • Shelton, CT 06484

Phone (800) 288-6000 • Fax (800) 255-1031 • Specifications subject to change without notice.

