

Straight Blade Devices

20A, 250V, 2 Pole, 3 Wire Grounding

HBL[®] Extra Heavy Duty MAX, Specification Grade, Duplex Receptacle

HUBBELL

Features

- Triangle marking on face indicates isolated ground
- Slender/compact design
- Finder Groove Face
- Reduces installation time
- Fully insulated design

Ordering Information

Description	Device Color	UPC Number	Catalog Number
Isolated ground, back and side wired.	Orange	783585880556	IG5462

Listings

UL Listed to UL498 File No. E2186
 Certified to CSA, C22.2, No. 42 File 285
 NEMA[®] WD-6 Compliant
 NEMA[®] WD-6 Compliant

Specifications

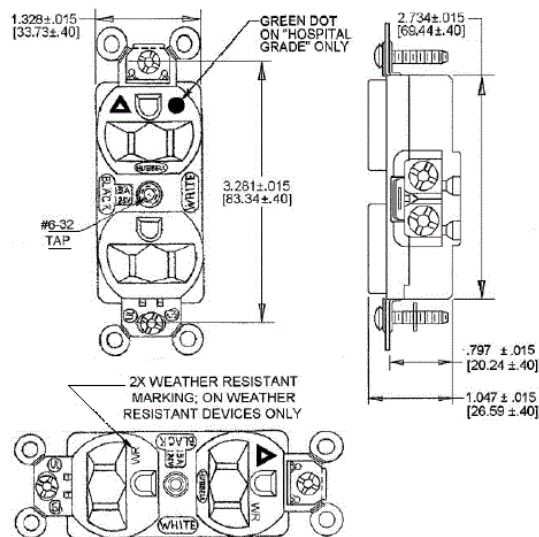
Face	Nylon
Base	PBT
Mounting Strap	.040" (1) Galvanized steel
Automatic Self-grounding Clip	Stainless steel
Ground Contact	.031" (.8) Brass
Clamp	Nickel plated steel
Ground Contact	.031 in. (.8) Brass
Terminal Screws	Brass
Mounting Screws	Stainless Steel

Performance

Electrical	
Current Interrupting	Certified for current interrupting at full rated current
Dielectric Voltage	Withstands 2,000V minimum
Mechanical	
Product Identification	Ratings are a permanent part of the device
Terminal Accommodation	#14-#10 AWG copper stranded or solid conductor only
Terminal Identification	Terminals identified in accordance with UL 498 and CSA
Environmental	
Flammability	UL 94 V-2 or better
Operating Temperatures	Maximum continuous 75°C; minimum -40°C (w/o impact)



20A 250V
 NEMA 6-20R
 UL CSA
 2 HP



Complementary Products

Wallplate or Weatherproof Cover Duplex Opening

Online Resources

Customer Sales Drawings
 eCatalog
 Installation Instructions

Dimensions in Inches (mm)

Hubbell Wiring Device-Kellems • Hubbell Incorporated (Delaware) • 40 Waterview Drive • Shelton, CT 06484

Phone (800) 288-6000 • Fax (800) 255-1031 • Specifications subject to change without notice.

