

Accessories

OPTIMYZER[®]

Low Bay Replacement Lens

Features

- End of aisle lens for low bay applications
- 3 to 1 radius-to-mounting height, 8' to 16' sensor mounting height
- IP65, NEMA 3R watertight, and outdoor rated, when use with suffix XT sensors

Ordering Information

Description	Device Color	UPC Number	Catalog Number
End of aisle lens for low bay applications	White	783585565439	LBRLXTEA

Listings

cULus Listed

Specifications

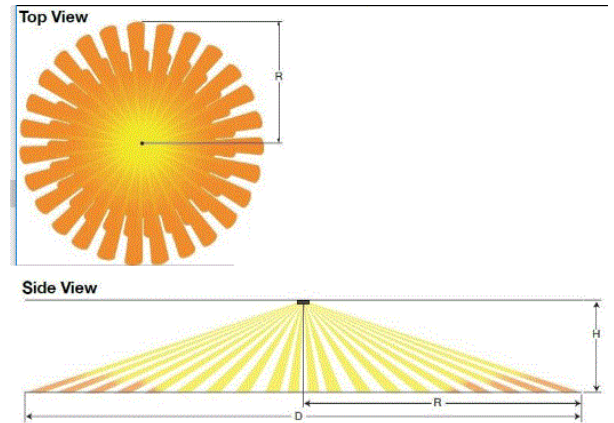
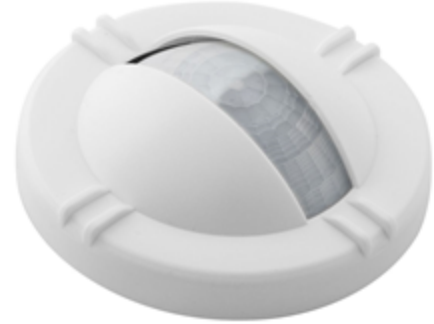
Casing	High-impact injection-molded thermoplastic
Size	3.25" Diameter x 1.25 height
Weight	0.8 oz
Mounting	Insert and twist clockwise on sensor's face

Performance

Environment

Moisture Resistance	IP65 Suitability
Operating temperature	-40°F to 149°F (-40°C to 65°C)
Relative humidity	0% to 95%

HUBBELL



Online Resources

eCatalog

Dimensions in Inches (mm)

Hubbell Wiring Device-Kellems • Hubbell Incorporated (Delaware) • 40 Waterview Drive • Shelton, CT 06484

Phone (800) 288-6000 • Fax (800) 255-1031 • Specifications subject to change without notice.

