

Raceway
Non-Metallic Raceway
PW2 WallTrak® (Latching) 2-Gang Divider

HUBBELL

Features

- For use with PDB12TGD 2-gang box only.
- Required when two services are passing through box and mounting devices perpendicular to raceway.

Ordering Information

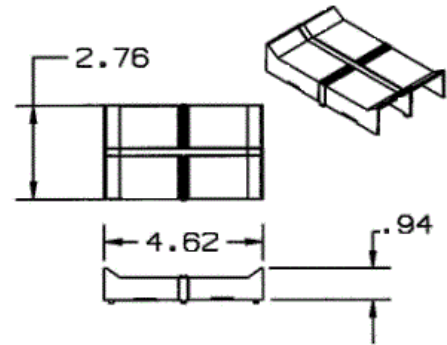
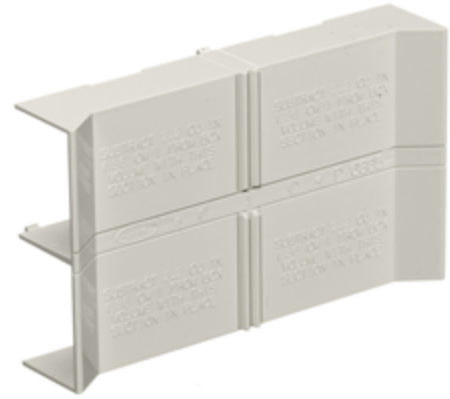
Description	Color	UPC Number	Catalog Number
2-Gang Divider	Office White	783585091303	PDB2DIV

Listings

UL Listed
CSA Certified

Specifications

Height	2.76"
Width	4.62"
Length	0.94"



Online Resources

Customer Use Drawing
eCatalog
Installation Instructions

Dimensions in Inches (mm)

Hubbell Wiring Device-Kellems • Hubbell Incorporated (Delaware) • 40 Waterview Drive • Shelton, CT 06484

Phone (800) 288-6000 • Fax (800) 255-1031 • Specifications subject to change without notice.

