

**Raceway**  
**Non-Metallic Raceway**  
**PP1 PremiseTrak<sup>®</sup> (Latching) Flat Elbow**  
**Base and Cover**

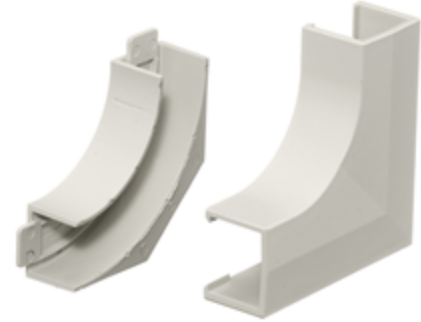
# HUBBELL

### Features

- Full capacity 1¼ in. bend radius flat elbow.

### Ordering Information

Description	Color	UPC Number	Catalog Number
Flat Elbow Base and Cover	Office White	783585090504	PP1FEBC

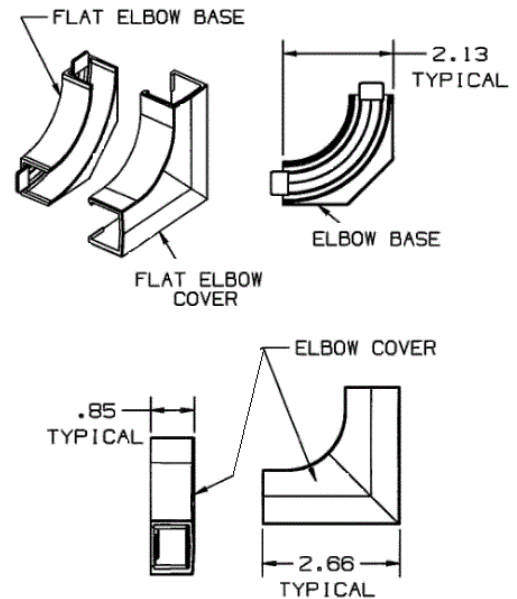


### Listings

UL Listed  
CSA Certified

### Specifications

Height	0.85"
Width	2.62"
Length	2.62"



### Online Resources

Customer Use Drawing  
eCatalog  
Installation Instructions

Dimensions in Inches (mm)

Hubbell Wiring Device-Kellems • Hubbell Incorporated (Delaware) • 40 Waterview Drive • Shelton, CT 06484

Phone (800) 288-6000 • Fax (800) 255-1031 • Specifications subject to change without notice.

