

Raceway
 Non-Metallic Raceway
 Non-Latching PremiseTrak[®] 1-Gang Deep
 Box

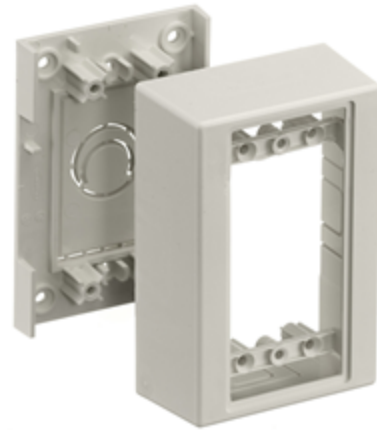
HUBBELL

Features

- For deep devices or applications where additional room is beneficial. See page R-63 for recommended plate options.

Ordering Information

Description	Color	UPC Number	Catalog Number
1-Gang Deep Box	Office White	783585337876	PT12DBA

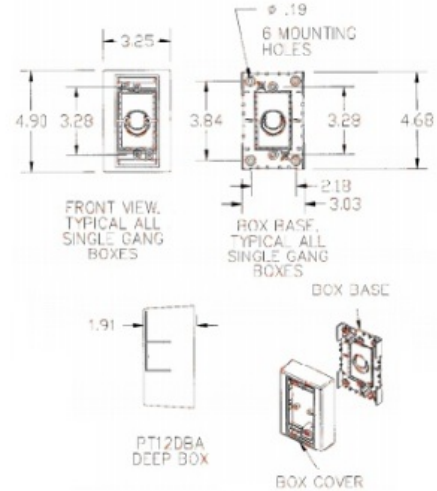


Listings

UL Listed
 CSA Certified

Specifications

Height	4.90"
Width	3.25"
Length	1.91"



Online Resources

Customer Use Drawing
 eCatalog
 Installation Instructions

Dimensions in Inches (mm)

Hubbell Wiring Device-Kellems • Hubbell Incorporated (Delaware) • 40 Waterview Drive • Shelton, CT 06484

Phone (800) 288-6000 • Fax (800) 255-1031 • Specifications subject to change without notice.

