

Switches and Lighting Controls

Decorator Series, 15A 125V AC

1) Single Receptacle, 1) Single Pole Rocker



Features

- Smooth, quiet rocker
- Low profile, less than 1 inch deep
- Self-grounding feature is standard
- Residential Grade

Ordering Information

|       |              |                |
|-------|--------------|----------------|
| Color | UPC          | Catalog Number |
| Gray  | 883778110177 | RCD108GY       |

Listings

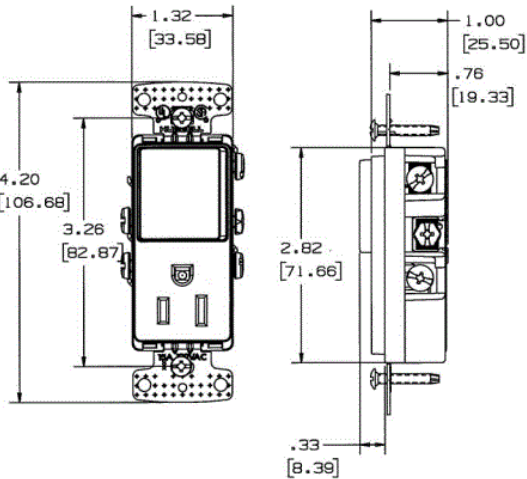
UL Listed E3896  
CSA Certified

Specifications

|                          |   |
|--------------------------|---|
| Action                   | Snap Switch   |
| Contact Configuration    | Two Position  |
| Environmental Conditions | Indoor Dry Unless Protected By Additional Means           |
| Operating Cycles         | 30,000 Minimum  |
| Operating Temperature    | Max Continuous- 60 Degrees C, Minimum- -20 Without Impact |
| Wattage                  | 1875  |

Performance

|                        |  |
|------------------------|--|
| <b>Electrical</b>      |  |
| Dielectric voltage     | Withstands 1,500V AC minimum for 1 minute  |
| Endurance              | 30,000 cycles minimum  |
| Max. working voltage   | 120V   |
| Overload               | 1.5 times rating   |
| <b>Mechanical</b>      |  |
| Terminal accommodation | Back and side wire: #14 AWG min. - #12 AWG max. solid and stranded copper wire only; push wire: #14 AWG solid copper wire only |
| <b>Environmental</b>   |  |
| Flammability           | UL V-0   |
| Operating Temperatures | Maximum continuous 60°C; minimum -20°C (without impact)  |



Online Resources

Customer Sales Drawings  
eCatalog  
Installation Instructions

