

## Switches and Lighting Controls

### Decorator Series, 15A 125V AC

#### 1) Single Receptacle, 1) Single Pole Rocker

#### Features

- Smooth, quiet rocker
- Low profile, less than 1 inch deep
- Self-grounding feature is standard
- Residential Grade

#### Ordering Information

|              |              |                       |
|--------------|--------------|-----------------------|
| <b>Color</b> | <b>UPC</b>   | <b>Catalog Number</b> |
| Light Almond | 883778119132 | RCD108LA              |

#### Listings

CSA Certified  
UL Listed E3896

#### Specifications

|                          |  |
|--------------------------|--|
| Action                   | Snap Switch  |
| Contact Configuration    | Two Position   |
| Environmental Conditions | Indoor Dry Unless Protected By Additional Means              |
| Operating Cycles         | 30,000 Minimum   |
| Operating Temperature    | Max Continuous- 60 Degrees C, Minimum-<br>-20 Without Impact |
| Wattage                  | 1875   |

#### Performance

|                      |   |
|----------------------|---|
| <b>Electrical</b>    |   |
| Dielectric voltage   | Withstands 1,500V AC minimum for 1 minute |
| Endurance            | 30,000 cycles minimum                     |
| Max. working voltage | 120V                                      |
| Overload             | 1.5 times rating                          |

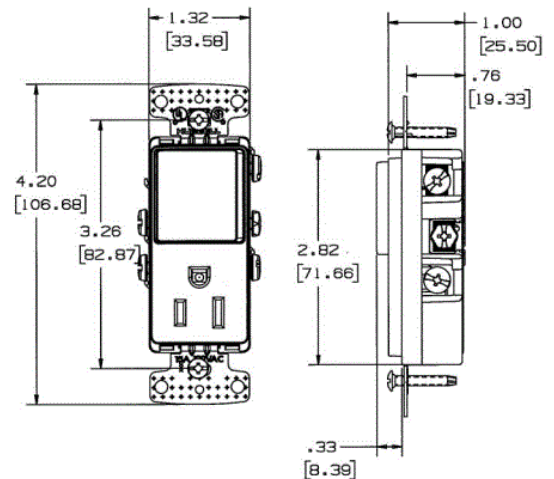
#### Mechanical

|                        |  |
|------------------------|--|
| Terminal accommodation | Back and side wire: #14 AWG min. - #12 AWG max. solid and stranded copper wire only; push wire: #14 AWG solid copper wire only |
|------------------------|--|

#### Environmental

|                        |   |
|------------------------|---|
| Flammability           | UL V-0  |
| Operating Temperatures | Maximum continuous 60°C; minimum -20°C (without impact) |

# HUBBELL



#### Online Resources

Customer Sales Drawings  
eCatalog  
Installation Instructions

Dimensions in Inches (mm)

Hubbell Wiring Device-Kellems • Hubbell Incorporated (Delaware) • 40 Waterview Drive • Shelton, CT 06484

Phone (800) 288-6000 • Fax (800) 255-1031 • Specifications subject to change without notice.

