

Fire-Rated Poke-Throughs

10" SystemOne Series

Center Bottom Feed Plate



Features

- Bottom Feed Plates are Required to Maintain S1R10PTFIT Fitting Fire Rating
- Variety of Feed Plates Offers Installation Flexibility
- Includes Necessary Mounting Hardware

Ordering Information

| Description  | UPC Number   | Catalog Number |
|--|--------------|----------------|
| SystemOne, 10" Series, Bottom Feed Plate, Center, One Gang, 1-1/4" EMT | 783585548043 | S1R10CBF125    |



Listings

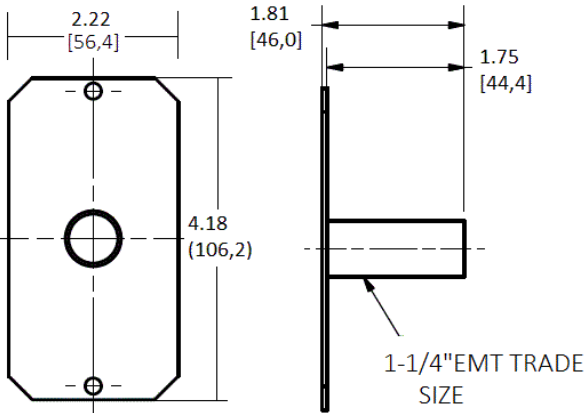
cULus Listed

Specifications

|          |                      |
|----------|----------------------|
| Material | Pre-Galvanized Steel |
| Finish   | Natural              |

Performance

|                         |            |
|-------------------------|------------|
| Application Type        | 1-1/4" EMT |
| Bottom Fitting Position | Center     |



Complementary Products

|                         |            |
|-------------------------|------------|
| Fire-Rated Poke-Through | S1R10PTFIT |
|-------------------------|------------|

Online Resources

Customer Use Drawing  
eCatalog  
Installation Instructions

