

Floor Boxes / Fire-Rated Poke-Throughs

SystemOne Flush

Sub-Plate



Features

- Used with automatic receptacle control systems
- Laser marked
- Black Powder Coated

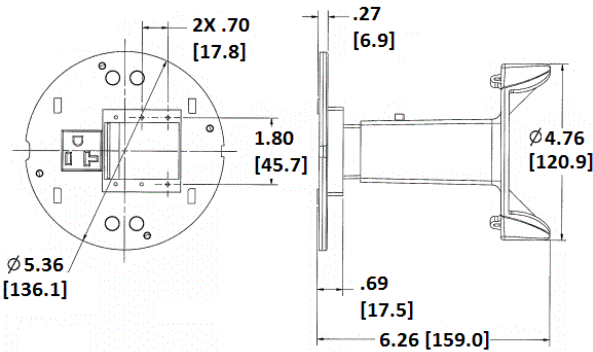
Ordering Information

- Includes necessary mounting hardware

Catalog Number	UPC	Description
S1SPEXT1C	783585545622	Sub-plate with opening for 3x Extron MAAP plates and 1x pre-wired 20A receptacle

Standards

cULus Listed



Online Resources

eCatalog

