

2-Gang Rectangular Flanges

Features

- Solid Aluminum Rectangular Flat Flange with Beveled Edges and Brushed Finish
- Beveled Edges Provides a Soother Transition to Hard Finished Surfaces
- Low Profile, 0.125" Height
- Includes (2) 6" #12 AWG Grounding Wires
- Meets ADA standards for accessible design

Ordering Information

Flange Style	Box Type	UPC	Catalog Number
Rectangular	Rectangular	783585696362	SA3084WB

Listings

cULus Listed
ADA compliant flange

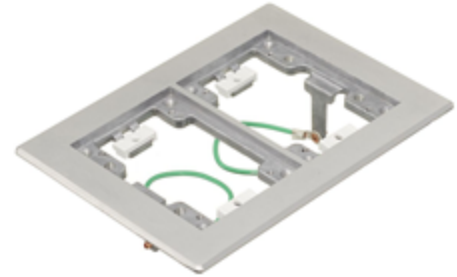
Specifications

Flange Material	Brushed Aluminum
Device Spacer Material	Thermoplastic
Flange Grounding	6" Long #12 AWG Solid Copper Wire

Performance

Mechanical

Flange Height	.125" [3.2mm]
Flange Length	4.85" [116.3mm]
Flange Width	8.13" [206.54mm]



Related Products

Duplex Flap Aluminum Cover	SA3825
StyleLine® Flap Aluminum Cover	SA3826
Duplex Screw Aluminum Cover	SA3625
2-1/8" x 1" Combo Aluminum Cover	SA2625

Online Resources

Customer Sales Drawings
eCatalog
Installation Instructions