

Straight Blade Devices

15 Amp, 125 Volt, 2-Pole, 3-Wire

inVIEW Illuminated Hospital Grade Devices

HUBBELL

Features

- Face LED Indicator
- Audible SNAP, indicates solid connection
- Reduces Installation Time
- Tamper-Resistant



15A 125V AC
NEMA 5-15R
UL CSA
0.5 HP



Ordering Information

Description	UPC Number	Catalog Number
S-CONNECT DUP HG 15A/125V LED TR GY	783585250359	SNAP8200GYLTR

Listings

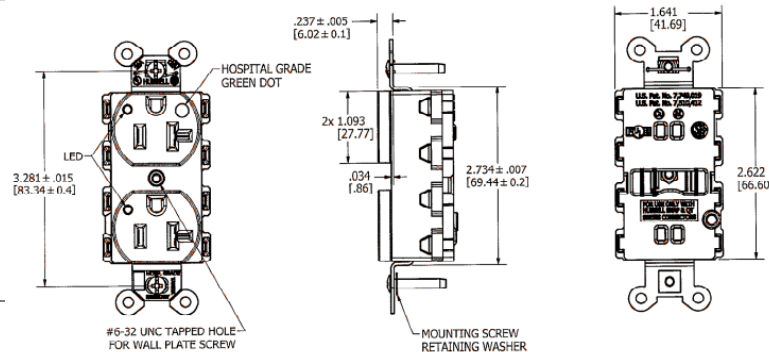
UL
CSA

Specifications

Top	Polycarbonate
Base	Nylon
Contacts	Brass
Bridge	Galvanized Steel
Mounting Screws	Zinc Plated Steel

Performance

Electrical	
Dielectric Voltage	Withstands 2,000V minimum
Current Interrupting	Certified for current interrupting at full rated current
Mechanical	
Product Identification	Ratings are a permanent part of the device
Environmental	
Flammability	UL 94V-2
Operating Temperature	Maximum continuous 75°C; minimum -40°C (w/o impact)



Online Resources

Customer Sales Drawings
eCatalog
Installation Instructions

Dimensions in Inches (mm)

Hubbell Wiring Device-Kellems • Hubbell Incorporated (Delaware) • 40 Waterview Drive • Shelton, CT 06484

Phone (800) 288-6000 • Fax (800) 255-1031 • Specifications subject to change without notice.

