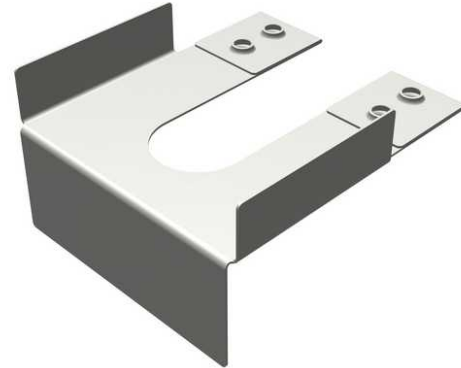




WEEB-ADR, WEEB Top Clamp Washer, 1.34 IN L, 1.18 IN W , 0.38 IN hole size, Rigid

By WILEY
Catalog # [WEEB-ADR](#)



WEEB® Washer Electrical Equipment Bond.

Features

- Made from corrosion resistant 304 stainless steel for outstanding durability and performance
- Eliminates the need for surface preparation and oxide inhibitor
- Detailed manual specifying proper hardware, torque, and mounting information is available upon request
- UL467 Recognized for grounding and bonding equipment
- Custom grounding and bonding solutions available upon request

Application

WEEB washers offer a simple, low cost method to bond any non-conductive coated surfaces together reducing time, labor costs and the amount of copper wiring. WEEB's patented teeth pierce through most non-conductive coatings and embed into the underlying metal creating a bonding connection between the mounting surface and coated metal component that it is installed on or between.

General

Item Type	3C
Material	304 Stainless Steel
UPC	781810569795
UPC 12 Digit	7818105697955

Dimensions

Dimension - Thread Size -

Certifications and Compliance

Certification - CSA Approved	N
Certification - ETL	Y
Certification - UL Recognized	Y
Certification - cULus	N
Certified Listed	UL2703 Recognized
Industry Standard(s)	UL2703 Recognized
Standards - RoHS Compliance Status	CM
UL Listed	Yes

Logistics

Carton Quantity 4000

Product Assets

[Brochures - WEEB Washer Guide and WEEB Washer Theory](#)
[Catalogs - Full Line BURNDY Catalog](#)
[Customer Notices - Prop 65 Notice](#)
[Sales Drawings - 50021829](#)



A proud member of the Hubbell Family.

©2024 Hubbell Incorporated. All rights reserved.
WLY-WEEB-ADR-SPEC-EN | REV 1/2024