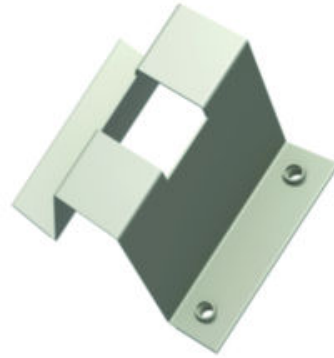




WEEB-DHF, WEEB Top Clamp Washer, 1.06 IN L, 1.13 IN W , 0.30 IN hole size, Flexible

By WILEY
Catalog # [WEEB-DHF](#)



304 Stainless Steel Electrical Equipment Bond Washer; 1.06” Length; 1.13” Width; 0.60” Height; 0.30” Hole Size; Flexible.

Features

- Made from corrosion resistant 304 stainless steel for outstanding durability and performance
- Eliminates the need for surface preparation and oxide inhibitor
- Detailed manual specifying proper hardware, torque, and mounting information is available upon request
- UL467 Recognized for grounding and bonding equipment
- Custom grounding and bonding solutions available upon request

General

Application	WEEB washers offer a simple, low cost method to bond any non-conductive coated surfaces together reducing time, labor costs and the amount of copper wiring. WEEB’s patented teeth pierce through most non-conductive coatings and embed into the underlying metal creating a bonding connection between the mounting surface and coated metal component that it is installed on or between.
Catalog Number	WEEB-DHF
Item Type	4D
Material	304 Stainless Steel
UPC	781810540190
UPC 12 Digit	7818105401900

Dimensions

Dimension - Thread Size -

Certifications And Compliance

Certification - CSA Approved	N
Certification - ETL	Y
Certification - UL Recognized	Y
Certification - cULus	N
Certified Listed	UL2703 Recognized
Industry Standard(s)	UL2703 Recognized
Standards - RoHS Compliance	CM
Status	
UL Listed	Yes

Logistics

Carton Quantity 6000

Product Assets

- [Brochures - WEEB Washer Guide and WEEB Washer Theory](#)
- [Catalogs - BURNDY Master Catalog - Full Line BURNDY Catalog](#)
- [Catalogs - BURNDY Master Catalog - Section E4 - Wiley Grounding](#)
- [Catalogs - BURNDY Master Catalog - Section G - Wire Management](#)
- [Certifications - UL Standard for Safety for Grounding & Bonding Equipment, UL 467, CSA C22.2 No. 41-13](#)
- [Customer Notices - Prop 65 Notice](#)
- [Sales Drawings - 50008795](#)



A Hubbell brand

©2024 Hubbell Incorporated. All rights reserved
WLY-WEEBDHF-SPEC-EN | REV 6/2024