

TradeSelect

15 A, 250V kV, 2-Pole, 3-Wire Grounding

Single Receptacle, Weather Resistant



Features

- Smooth indented face appearance
- Multiple-drive Slot/Phillips/Robertson head screws
- Tough thermoplastic ultrasonically welded cover and base

Ordering Information

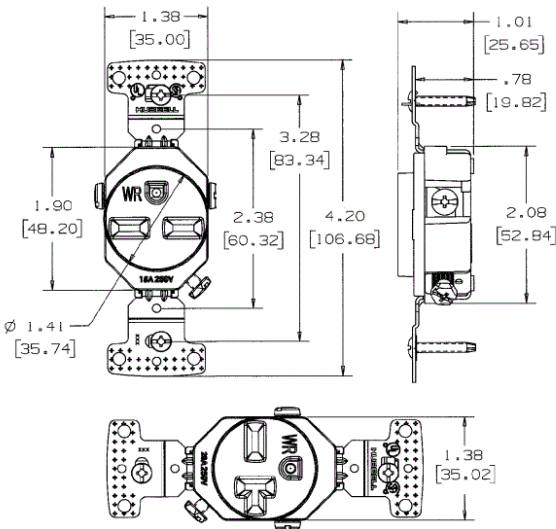
Color	UPC	Catalog Number
White	883778302756	RR155WWR

Specifications

NEMA Rating	6-15R
Wire Size	#14 AWG to #12 AWG
Wattage	3750
Environmental Conditions	Weather Resistant
Special Features	Weather Resistant- Self Grounding
Phase	Single Phase

Performance

Environmental	
Operating temperature	20°C to 60°C
Mechanical	
Terminal	Terminal screws accepts up to #12 AWG, Push wire designed for #14 AWG solid copper wire only



Online Resources

- Customer Sales Drawings
- eCatalog
- Installation Instructions

