

Receptacles, Residential Grade, Tamper Resistant Duplex

Features

- Smooth indented face appearance
- Multiple-drive Slot/Phillips/Robertson head screws
- Tough thermoplastic ultrasonically welded cover and base

Ordering Information

Color	UPC	Catalog Number
Black	883778301506	RR15SBKTR

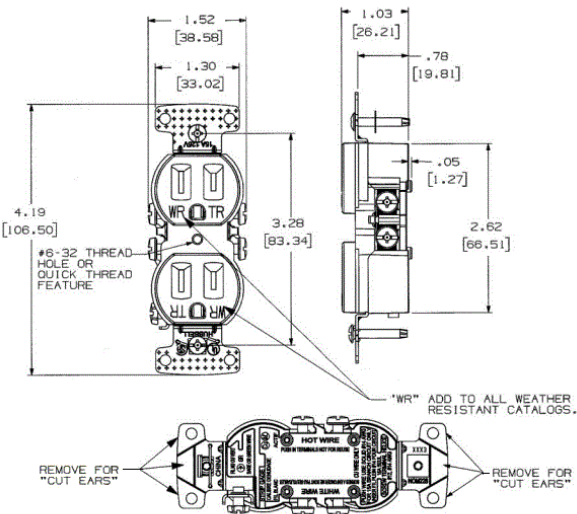
Specifications

NEMA Rating	5-15R
Wire Size	#14 AWG to #12 AWG
Wattage	1875
Environmental Conditions	Indoor Dry Unless Protected By Additional Means
Special Features	Tamper Resistant- Self Grounding
Phase	Single Phase

Performance

Environmental	
Operating temperature	20°C to 60°C
Mechanical	
Terminal	Terminal screws accepts up to #12 AWG, Push wire designed for #14 AWG solid copper wire only

HUBBELL



Online Resources

Customer Sales Drawings  
eCatalog