

TradeSelect

20 A, 250V kV, 2-Pole, 3-Wire Grounding

Residential Grade, Receptacles, Weather
Resistant, Single

Features

- Smooth indented face appearance
- Multiple-drive Slot/Phillips/Robertson head screws
- Tough thermoplastic ultrasonically welded cover and base

Ordering Information

Color	UPC	Catalog Number
Ivory	883778302800	RR205IWR

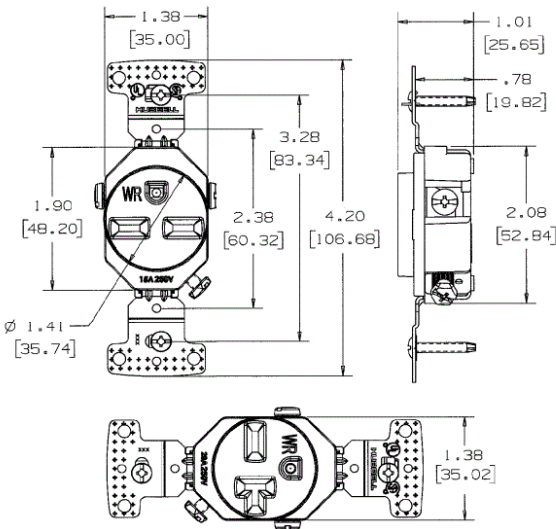
Specifications

NEMA Rating	6-20R
Wire Size	#12 AWG to #10 AWG
Wattage	5000
Environmental Conditions	Weather Resistant
Special Features	Weather Resistant- Self Grounding
Phase	Single Phase

Performance

Environmental	
Operating temperature	20°C to 60°C
Mechanical	
Terminal	Terminal screws accepts up to #12 AWG, Push wire designed for #14 AWG solid copper wire only

HUBBELL



Online Resources

- Customer Sales Drawings
- eCatalog
- Installation Instructions

