

TradeSelect

20 A, 250V kV, 2-Pole, 3-Wire Grounding

Single Receptacle, Weather Resistant

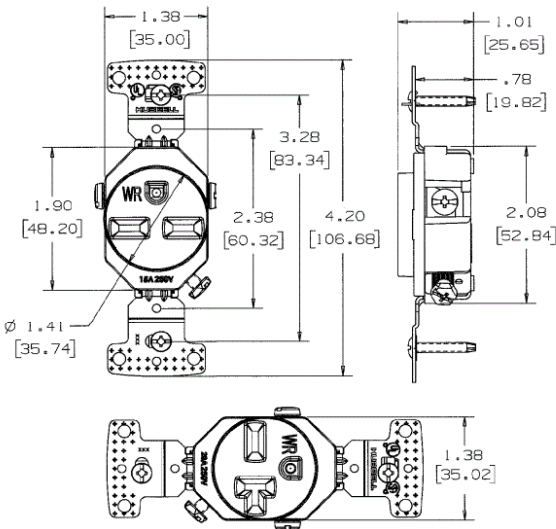
- Features
- Smooth indented face appearance
 - Multiple-drive Slot/Phillips/Robertson head screws
 - Tough thermoplastic ultrasonically welded cover and base

Ordering Information		
Color	UPC	Catalog Number
Light Almond	883778302817	RR205LAWR

Specifications	
NEMA Rating	6-20R
Wire Size	#12 AWG to #10 AWG
Wattage	5000
Environmental Conditions	Weather Resistant
Special Features	Weather Resistant- Self Grounding
Phase	Single Phase

Performance	
Environmental	
Operating temperature	20°C to 60°C
Mechanical	
Terminal	Terminal screws accepts up to #12 AWG, Push wire designed for #14 AWG solid copper wire only

HUBBELL



Online Resources

Customer Sales Drawings

eCatalog

Installation Instructions

