

TradeSelect

20 A, 250V kV, 2-Pole, 3-Wire Grounding

Residential Grade, Weather Resistant  
Receptacles, Single

Features

- Smooth indented face appearance
- Multiple-drive Slot/Phillips/Robertson head screws
- Tough thermoplastic ultrasonically welded cover and base

Ordering Information

Color	UPC	Catalog Number
White	883778302824	RR205WWR

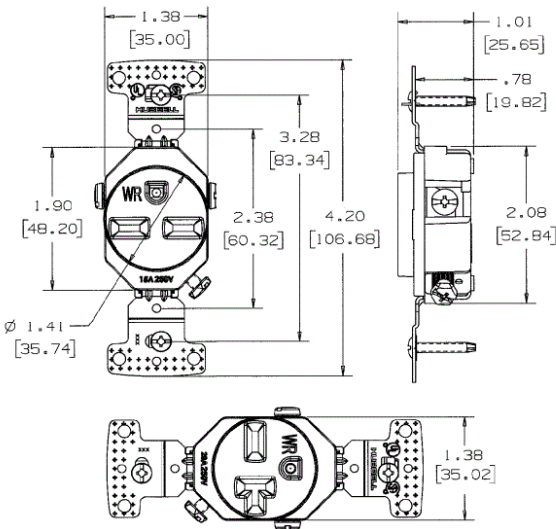
Specifications

NEMA Rating	6-20R
Wire Size	#12 AWG to #10 AWG
Wattage	5000
Environmental Conditions	Indoor Dry Unless Protected By Additional Means
Special Features	Weather Resistant- Self Grounding
Phase	Single Phase

Performance

Environmental	
Operating temperature	20°C to 60°C
Mechanical	
Terminal	Terminal screws accepts up to #12 AWG, Push wire designed for #14 AWG solid copper wire only

HUBBELL



Online Resources

Customer Sales Drawings  
eCatalog  
Installation Instructions

