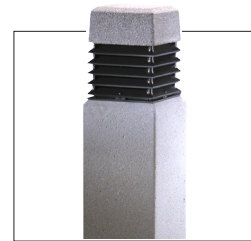


CB9S – Contemporary Concrete Bollard – 9" Square

TYPE

- Available in 3000K, 4000K and 5000K CCT
- Body and cap are composed of precast concrete reinforced with an internal cage structure of steel
- Grills are cast aluminum with stainless steel hardware
- Inner lens is sealed to the grill frame
- Integral prewired ballast module
- Electrical module is silicone gasketed for weather tight operations
- Color of grills feature TGIC polyester powder coat finish with choice of 13 standard colors



| 1. BOLLARD | | | | 2. LAMP/BALLAST | | 3. FINISH | | 4. GRILL COLOR | | 5. OPTIONS | | | 6. MOUNTING | |
|------------|-----|-------|-----------|-----------------|--|-----------|--|----------------|--|------------|--|--|-------------|--|
| TYPE | OAH | GRILL | TOP STYLE | | | | | | | | | | | |
| CB9 S | | | | | | | | | | | | | | |

1. BOLLARD

| | OAH (inches) | GRILL | TOP STYLE | WT (lbs.) |
|-------|--------------|--------|-----------|-----------|
| CB9 S | 24 | CUTOFF | FLAT | 130 |
| CB9 S | 36 | CUTOFF | FLAT | 150 |
| CB9 S | 42 | CUTOFF | FLAT | 170 |
| CB9 S | 24 | CUTOFF | PYRM | 130 |
| CB9 S | 36 | CUTOFF | PYRM | 150 |
| CB9 S | 42 | CUTOFF | PYRM | 170 |

2. LAMP/BALLAST

120-277VAC (50/60Hz) input.

| | |
|----------|---------------------------------|
| 27LED-WW | 28 watts, IES Type 5, 3000K CCT |
| 27LED-NW | 28 watts, IES Type 5, 4000K CCT |
| 27LED-BW | 28 watts, IES Type 5, 5000K CCT |

3. CONCRETE FINISH

MSB (*Medium sandblast, natural color finish*)
 AGR (*Exposed aggregate finish*)

4. COLOR

Standard Color

| | |
|-----|------------------|
| WH | Arctic White |
| BL | Black |
| BLT | Matte Black |
| DB | Dark Bronze |
| DGN | Dark Green |
| TT | Titanium |
| WDB | Weathered Bronze |
| MDB | Bronze Metallic |
| VBU | Verde Blue |
| CRT | Corten |
| MAL | Matte Aluminum |
| MG | Medium Grey |
| AGN | Antique Green |
| LG | Light Grey |

Premium Color

| | |
|--------|-------------------|
| SHK | Shamrock |
| SPP | Salt and Pepper |
| SFM | Seafoam |
| WCP | Weathered Copper |
| RAL | RAL 4 digit Color |
| CUSTOM | Custom Color |

5. OPTIONS

RBC (*A single gang junction box, cast in place, weatherproof cover only. Consult factory for location*)

Colored Concrete (*Based on Davis colors. For custom color and aggregate, customer must provide aggregate, sand, and colorant*)

6. MOUNTING

EXT (*External mounting*)

Note: Internal mounting not available with CB9S

SPECIFICATIONS

CONCRETE BODY AND CAP

The body and caps are composed of precast concrete reinforced with an internal cage structure of steel. The concrete bodies are one-piece castings with a minimum wall thickness of 3"/75mm. All threaded inserts are welded to the steel reinforcing cage and cast in place. The base plate for anchoring is 1/4" hot dipped galvanized steel.

GRILL

Grills shall be cast aluminum, minimum wall thickness of .250 inches. All castings shall be pure aluminum #356 alloy, free of any foreign material or porosity. Grills shall have cast-in-place, integral mounting lugs for attachment to the concrete base. The inner lens shall be sealed to the grill frame. CB9 shall have a lightly diffused DR acrylic lens. CB12 and CB18 models shall have an opal acrylic lens. The grill assembly shall have a silicone gasket on the top and bottom for weather tight operation. Recessed stainless steel screws may be loosened for service access.

CUTOFF

Models with cutoff grill provide IES cutoff classification meaning less than 2.5% of light is emitted above 90° horizontal.

ELECTRICAL MODULE

The electrical module consists of the ballast module and lamp housing. All housing parts are aluminum with stainless steel hardware. The ballast module is prewired on an aluminum strap mounted to the underside of the lamp housing. The electrical module is silicone gasketed for weather tight operation.

See next page

JOB _____
 TYPE _____
 NOTES _____



CB9S – Contemporary Concrete Bollard – 9" Square

TYPE

FINISH

Concrete surface finish is natural concrete with a medium sandblast etch or exposed aggregate. Medium sandblast finish includes a clear anti-vandal sealer.

Grill finish consists of a five stage pretreatment regimen with a polymer primer sealer, oven dry off and top coated with a thermoset super TGIC polyester powder coat finish. The finish shall meet the AAMA 605.2 performance specification which includes passing a 3000 hour salt spray test for corrosion resistance

CERTIFICATION

All bollards shall be listed with ETL for outdoor, wet location use, UL1598 and Canadian CSA Std. C22.2 no250.

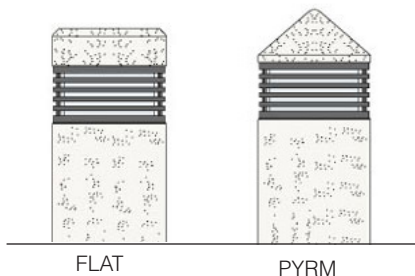
AAL reserves the right to change product specifications without notice.

WARRANTY / TERMS AND CONDITIONS OF SALE

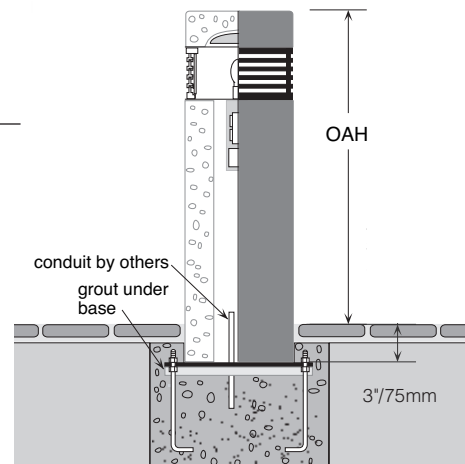
Download:

<http://www.hubbelling.com/resources/warranty/>

DIMENSIONS



TYPICAL

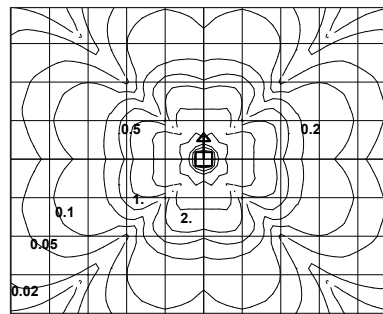


External Mounting

CB9S CO 27LED-WW WATTAGE: 32.5 LUMEN OUTPUT: 755 EFFICACY: 23.2 Lm/W

B1 U2 G1

| FORWARD LIGHT | | LUMEN | |
|---------------|------|-------|-----|
| FL | 30° | 0.9% | 6 |
| FM | 60° | 16.9% | 128 |
| FH | 80° | 17.6% | 133 |
| FVH | 90° | 5.7% | 43 |
| BACK LIGHT | | | |
| BL | 30° | 0.9% | 6 |
| BM | 60° | 16.9% | 128 |
| BH | 80° | 17.6% | 133 |
| BVH | 90° | 5.7% | 43 |
| UPLIGHT | | | |
| UL | 100° | 0% | 46 |
| UH | 180° | 0% | 87 |



UPLIGHT 17.8%
DOWNLIGHT 82.2%

3.5' MOUNTING HEIGHT

[IES files can be found at www.aal.net](http://www.aal.net)